

# Average weight of solar panel





## Overview

---

The average solar panel weight ranges from 40 to 55 pounds, with 40 pounds as the most common. Like all products' specifications, you'll spot exceptions. Some tiny portable panels weigh only 5 pounds, and heavy-frame panels can clock in at 62 pounds.

The average solar panel weight ranges from 40 to 55 pounds, with 40 pounds as the most common. Like all products' specifications, you'll spot exceptions. Some tiny portable panels weigh only 5 pounds, and heavy-frame panels can clock in at 62 pounds.

All individual solar panels weigh less than 100 lbs. However, solar systems with 8kW rated capacity and above add more than 1,000 lbs to your roof. Not to worry, however. We have sampled 6 different solar panels with wattages ranging from 100W to 400W, and total weights ranging from 11.5 lbs to.

On average, a solar panel can provide 15 watts per square foot. Let's start by breaking down the average dimensions of different solar panels by size. How Big Is a 100-Watt Solar Panel?

A 100-watt solar panel measures 47 inches long by 21.3 inches wide by 1.4 inches deep. A 100-watt solar panel is.

The 96 cell solar panel is characterized by an 8 feet by 12 feet grid configuration, covers an area of 17.5 square feet and weighs approximately 70 pounds. These panels are designed to handle the higher energy demands of large commercial or industrial properties. The area of a residential 60 cell.

In general, a solar panel consisting of 60 cells weighs between 18-24 kg (40-53 pounds) on average. Larger and more powerful solar panels can weigh much more. In this article, you will learn about the size and weight of solar panels. Among the most important factors that make solar panels so heavy:.

Here are the average solar panel weight numbers: Again, the exact weight of solar panels varies, especially if you opt for highly efficient brands like Maxeon. Its panels are powerful yet light, particularly when you compare them



to other brands' efficiencies and weights. For example, residential.

Residential solar panels usually have 60 cells and weigh about 40 pounds each. Commercial solar panels are slightly larger, usually around 72 cells, and weigh around 50 pounds each. The constituent solar cells only weigh a few hundred grams each; it's the frames and glass that make up the bulk of. How much do solar panels weigh?

Alright, here are 6 sampled solar panels with the wattages, dimensions, total weight, and weight per square foot (weight per square foot is calculated by dividing the total weight by solar panel roof area): As we can see, 100W solar panels weigh about 10-15 lbs, 200W solar panels about 20-30 lbs, and 400W Tesla roof panel weighs 51.8 lbs.

How much does a 60 cell solar panel weigh?

Every brand of solar panels has slight variations in their dimensions and weights, according to manufacturing material. Although the weight of different brands of solar panels varies, an average 60 cell solar panel weighs about 40 pounds. Other important factors are wattage and voltage/current requirements.

How much does a solar installation weigh?

When you take into account the solar panels and all the mounting equipment, racking, junction boxes, and wiring, the total weight of the solar installation comes in at around 3-4 pounds per square foot (this does not include the inverter, which usually gets bolted to the wall).

How much does A 72-cell solar panel weigh?

72-cell solar panels weigh around 61.73 pounds. As you may recall, these larger panels usually provide 350 to 400 watts. The weight of a solar panel per unit is an important consideration when deciding which size is best for your home, which we will discuss further in a later section.

How much do Maxeon solar panels weigh?

Its panels are powerful yet light, particularly when you compare them to other brands' efficiencies and weights. For example, residential and commercial M-Series Maxeon solar panels weigh an average of 48 pounds. Meanwhile, other Maxeon series' panels weigh a mere 33 pounds. [Related: What To Know Before Installing Solar Panels].



How much does an RV solar panel weigh?

RV solar panels are generally rated at 100-150 watts and are smaller and lighter than residential solar panels. In general, the average rigid solar panel used in RV solar systems is rated at 100 Watts and weighs about 15lbs. The following table compares the weight of some of the most popular RV solar panels:



## Average weight of solar panel

---



### How Much Do Solar Panels Weigh? A Complete Guide To Solar Panels Weight

Since residential panels weigh - on average - 40 lbs each, 5kW of solar panels weighs around 700 lbs. Including the weight of the mounting equipment, the overall weight that ...

### How much do solar panels weigh?

The weight of solar panels is down to the weight of their various components. Of these, the glass is the heaviest item, the other components being the aluminium frame, encapsulation foil, solar cells and the junction box.



### [How Much Do Solar Panels Weigh? \(Chart\)](#)

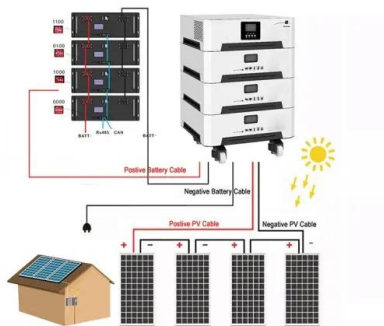
How big is a 400-watt panel? A panel size depends on its material, efficiency, and brand. But a 400W panel can be 75" x 45" on average. LG's 400W panels are 80" x 40". SunPower's 400W panels are 66" x 39". How ...

### [How Much Do Residential Solar Panels Weigh?](#)

A standard residential solar panel has 60 solar cells and weighs about 40 pounds, or 2.8 pounds per square foot. The total weight may vary depending on the manufacturer, materials,



mounting hardware, and roof type. The weight of a ...



### [Solar Panel Sizes, Dimensions & Weight , Solar Choice](#)

There isn't one single answer to the question "How big are solar panels?" but the size of the solar panels you install for residential or commercial solar systems matters. For one thing, solar panel sizes or dimensions, ...

### [How Much Does a Solar Panel Weigh? Solar Panel ...](#)

The residential solar panel consists of 60 solar cells, and the average weight of the panels is about 40 lbs. (18.14 kg). While this varies by brand, it is usually the same for all residential solar panels.



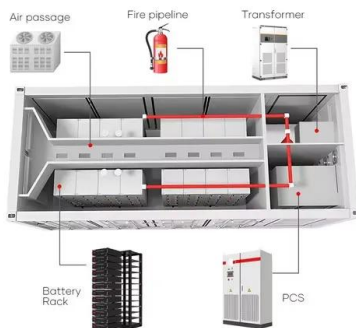
### **How Much Do Solar Panels Weigh?**

Different manufacturers create solar panels of different weights. On average, solar panels weigh between 10 and 20 pounds per square meter. For a sound roof, this weight won't threaten the roof's stability under the panels. The weight doesn't ...



### [How Much Do Solar Panels Weigh? A Complete ...](#)

Since residential panels weigh - on average - 40 lbs each, 5kW of solar panels weighs around 700 lbs. Including the weight of the mounting equipment, the overall weight that the system would add to the roof is 750 to ...



### **How Much Do Solar Panels Weigh? 1.30 - 2,608.7 lbs Chart**

We have sampled 6 different solar panels with wattages ranging from 100W to 400W, and total weights ranging from 11.5 lbs to 51.8 lbs, to figure out what is a typical solar panel weight per ...

### [How Much Do Solar Panels Weigh? A Complete Guide](#)

The average weight of a residential panel hovers around 42 pounds, with commercial ones tipping the scales at over 50 pounds. To calculate your array's total weight, determine how many square feet of solar panels ...



## **Contact Us**

---

For catalog requests, pricing, or partnerships, please visit:  
<https://solar360.co.za>