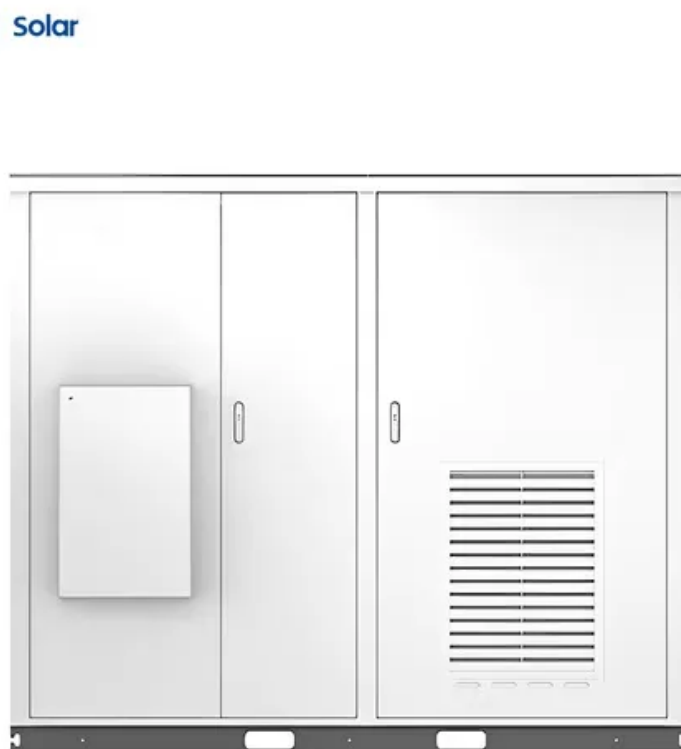


Bifacial solar panels installation guide





Overview

This article is the ultimate guide to bifacial solar panels. We'll start by defining what they are and discussing their importance and benefits. Then we'll delve into the working principles behind how these dual-sided solar modules generate electricity. To help steer your purchasing decision, we'll.

This article is the ultimate guide to bifacial solar panels. We'll start by defining what they are and discussing their importance and benefits. Then we'll delve into the working principles behind how these dual-sided solar modules generate electricity. To help steer your purchasing decision, we'll.

This general manual provides important safety information relating to the installation, maintenance and handling of bifacial double glass solar modules (BiKu and BiHiKu series). Professional installer must read these guidelines carefully and strictly follow these instructions. Failure to follow.

Conduct a thorough survey of the installation site to identify any potential obstacles or factors that may affect the efficiency of the solar panels. Evaluate the terrain taking note of slopes uneven surfaces and any shading elements such as nearby buildings or vegetation. 2. Clearing the Area.

This article serves as a guide on how to install bifacial solar panels, covering the advantages and considerations, as well as tips for bifacial solar panel mounting and installing bifacial solar panels on roofs. What Are Bifacial Solar Panels?

Bifacial solar panels are an innovative solar.

These limits are designed to provide reasonable protection against harmful interference in a residential installation. This equipment generates, uses, and can radiate radio frequency energy and, if not installed and used in accordance with the instructions, may cause harmful interference to radio.

The technology behind solar panels is continuously evolving, and manufacturers are now capable of producing bifacial solar panels. As the name suggests, bifacial solar panels are devices that feature photovoltaic



cells on both the front and back sides, designed to capture sunlight from both.

Thanks for choosing Seraphim Photovoltaic Modules (hereafter referred to as “PV Module”), This Guide is to give information on how to apply Seraphim PV modules properly. Installers must read and understand this Guide prior to installation. For any questions, please contact our technical department.



Bifacial solar panels installation guide



[Installation and Maintenance of Bifacial Solar Panels](#)

Bifacial solar panels can generate up to 30% more electricity than traditional solar panels because these panels absorb sunlight from both sides. Increased efficiency makes bifacial solar panels a more cost-effective ...

[Bifacial Solar Panel Installation: A Quick Guide](#)

Studies show that bifacial solar panels can significantly enhance energy output in specific environments, compared to traditional one-sided panels. Their ability to generate power from both sides makes them ...



JA Solar PV Bifacial Double-glass Modules Installation ...

JA Solar modules can be mounted in landscape or portrait orientation. For the bifacial modules, in order to maintain the energy yield of module rear side, the distance between the bottom of ...

[The Ultimate Guide to Solar Panel Installation ...](#)

The choice to install solar panels is a big one, and getting the right system for your needs can make all the difference in terms of energy efficiency and long-term savings. In this article,



we will guide you through ...



Bifacial Solar Panels Guide

Who Should Use Bifacial Solar Panels? The demand for bifacial solar panels is increasing at a first-rate. Both residential and commercial property owners are eligible candidates for these devices. However, it is imperative to run a ...

[Best Practices for Installing Bifacial Solar Panels](#)

Discover the benefits of bifacial solar panels and learn how to optimize their installation for maximum efficiency. This article covers different panel types and essential best practices, including ideal height, spacing, site selection, ...



Contact Us

For catalog requests, pricing, or partnerships, please visit:
<https://solar360.co.za>