

Connecting solar panels to battery bank





Overview

This article from ShopSolar.com provides a guide on how to connect solar panels to a battery bank, charge controller, and inverter in a DIY solar panel system. It emphasizes the importance of proper preparation, using the right components, and ensuring safety.

This article from ShopSolar.com provides a guide on how to connect solar panels to a battery bank, charge controller, and inverter in a DIY solar panel system. It emphasizes the importance of proper preparation, using the right components, and ensuring safety.

Connecting solar panels to batteries is a critical skill for anyone looking to harness renewable energy for their home, RV, boat, or off-grid system. While the process might seem straightforward, improper connections can lead to equipment damage, safety hazards, or system failures that cost.

In this article, we'll explain how to wire together solar panels, a regulator and a battery. But what does a battery fear?

From what does a controller actually protect it?

Well, a charge controller Whenever you add energy storage to a solar system, add a charge controller in between the panels and.

This article will discuss several ways of how to wire and hook solar panels to battery. However, if you follow the instructions in this guide, you will avoid damaging the battery and the equipment connected to it. The instructions below serve as a general guideline for connecting different types of.

This article from ShopSolar.com provides a guide on how to connect solar panels to a battery bank, charge controller, and inverter in a DIY solar panel system. It emphasizes the importance of proper preparation, using the right components, and ensuring safety throughout the installation process.

Connecting solar panels to a battery is a crucial step in this process. It allows you to store energy for later use. This guide will walk you through the process



of how to connect solar panels to a battery. You'll learn how to set up a battery charging system efficiently. We'll cover everything.

Connecting solar panels to a battery and inverter is crucial to harness solar power effectively. This article provides a comprehensive guide on connecting these components to maximize the benefits of solar energy. To harness solar power effectively, it's crucial to understand and choose the right. How do I connect a solar panel to a battery?

Proximity to battery: Locate the solar panel close to the battery to minimize the length of wire runs and resistive losses. **Attaching a solar panel to a battery** requires a systematic approach. Following these steps ensures a successful connection. **Check Compatibility:** Verify the voltage and type of battery matches your solar panel.

How does a solar battery bank work?

From the solar panels and through the charge controller, every watt-hour of electricity produced in an off-grid DIY system is sent to a solar battery bank. The battery bank is actually connected to the charge controller, rather than the solar panels themselves, though some products may come with the charge controller already attached.

How do you connect a solar panel to a charge controller?

Connectors: Use MC4 connectors for a secure connection between the solar panel and charge controller. **Battery Cables:** Choose appropriately sized cables to connect the battery to the charge controller. Thicker cables reduce voltage drop. **Wire Strippers:** Strip the insulation from wires to ensure proper connections without damaging them.

How to install solar panels on a generator?

This way, all you need to do is connect the solar panels directly to the generator to begin charging and using its battery power. Aside from the solar panels, battery bank, charge controller, inverter, and wiring, there are a few other things that you will need on hand when beginning a permanently affixed installation.

Why should you connect batteries to charge controllers before solar panels?

Connection sequence is critical for equipment safety – Always connect batteries to charge controllers before solar panels. This prevents controller



damage and ensures proper system voltage detection, as charge controllers use battery voltage as their reference point.

Should you connect solar panels to batteries?

Connecting solar panels to batteries is a critical skill for anyone looking to harness renewable energy for their home, RV, boat, or off-grid system. While the process might seem straightforward, improper connections can lead to equipment damage, safety hazards, or system failures that cost thousands of dollars to repair.



Connecting solar panels to battery bank

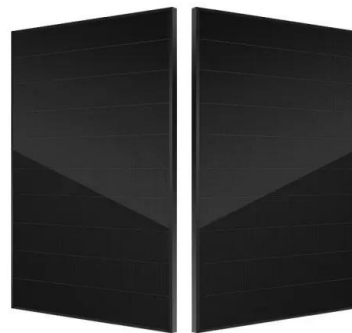


How to Wire a 12 Volt Solar System: Step-by-Step Guide with ...

Learn how to wire a 12-volt solar system with a detailed diagram. Get step-by-step instructions on connecting solar panels, batteries, charge controller, and inverter. Ensure efficient and reliable ...

How to Connect Solar Panels to a Battery: Step-by-Step Guide

6 ???· Learn step-by-step instructions from Outbax on connecting solar panels to a battery, including equipment needs, wiring methods, and safety precautions for effective energy setup.



[Solar Panel Wiring Diagram for All Setups \[+ PDFs\] - ...](#)



24V Solar Panel to Battery Wiring Diagram (in Series) If you're using a 24V battery bank and a 24V inverter, you'll want to bring your solar panel voltage up to 24V as well. This can be done either by using 24V solar panels ...

How to Connect Solar Charge Controller with Inverter: ...

Introduction To connect a solar charge controller with an inverter, you will need to first connect the solar panels to the charge controller, which



regulates the power coming in. Then, connect the charge controller to ...



[How To Use Solar Panels And Battery Banks In 7 Days to Die](#)

Combining Solar Panels and Battery Banks in 7 Days to Die The power output of your Solar Panels depends on the levels of the Solar Cells you have installed. Like Solar Panels, the Solar Cells can't be crafted and must be ...

[Connecting Two Charge Controllers To One Battery ...](#)

A solar charge controller is among the most essential equipment for any off-grid solar power system. Its importance is evident in the protection it provides to the battery bank, as it regulates the energy of the solar panels that ...



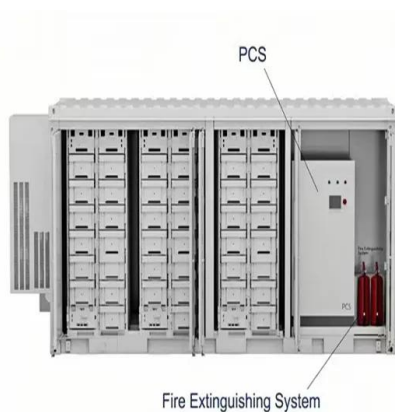
[How to Connect a Solar Panel to a Lithium Battery: A ...](#)

Discover how to seamlessly connect a solar panel to a lithium battery for a sustainable energy solution. This comprehensive guide explores the advantages of solar power, details different types of solar panels, and outlines ...



How can I connect solar banks in series ? in order to have out ...

You cannot connect multiple generators, be they gas generators or solar generators, into the same power network. Battery banks are not a generator object- So to include a battery bank, ...



[How to Wire Solar Panels: A Step-by-Step Guide](#)

Connect Solar Panels to the Battery Bank: How to connect solar panel to battery? Attach the cables from the charge controller to the positive and negative terminals of the battery bank to hook up solar panels to batteries.

[Connecting Solar Panels: A Step-by-Step Guide](#)

Learn the step-by-step guide for mounting, wiring, and connecting solar panels to the inverter, battery bank, and the grid. Conduct thorough testing and troubleshooting to ensure the efficient and safe operation ...



[2 separate Arrays connected to 2 separate](#)

i have 2 separate panel arrays in series (90volts with 39 amps) I want to connect each one to separate controllers 60a 150 volts and connect those 2 controllers to my battery bank which is 2 100ah 12v and one 200ah 12volt ...



Contact Us

For catalog requests, pricing, or partnerships, please visit:
<https://solar360.co.za>