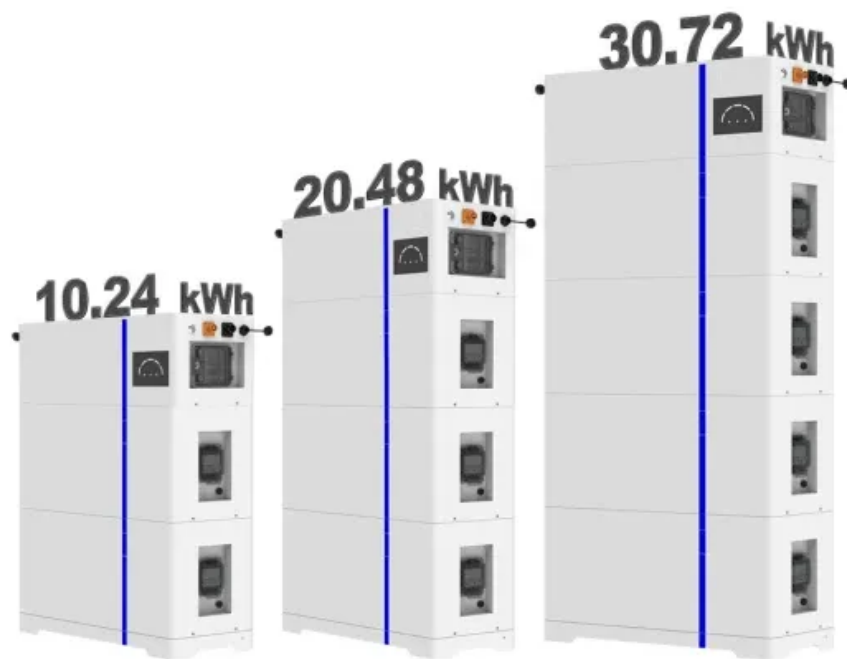


Dimensions of a 400 watt solar panel

ESS





Overview

What are the key features of a 400 watt solar panel?

A typical 400W solar panel size measures between 1,720–1,762 mm in length and 1,134 mm in width, with a surface area of about 2 square meters. These average solar panel sizes make them suitable for various applications, from rooftop installations to portable solar kits for sheds or RVs.

What are the dimensions of a 400W solar panel?

400W Solar Panel Dimensions: 1,720–1,762 mm (length) × 1,134 mm (width). Average Solar Panel Size: Approximately 2 square meters. Monocrystalline: High efficiency, ideal for limited spaces. Polycrystalline: Lower production costs, slightly less efficient.

How big is a 300 watt solar panel?

A typical 300-watt solar panel is 65.8 inches long and 36.1 inches wide. It takes up 16.5 sq ft of area. If you have a 1000 sq ft roof, and you can use 75% of that roof area for solar panels, you can theoretically put 45 300-watt solar panels on a 1000 sq ft roof. A typical 400-watt solar panel is 79.1 inches long and 39.1 inches wide.

How much space does a 400 watt solar panel take?

A 400-watt solar panel doesn't take that much space. Let us define how we calculate 400-watt solar panel space. A solar panel is typically 6.5 x 3.5 in dimensions, which makes about 22.75 square feet of space. 20% of space will be required for wiring, adjusting combiner boxes, and space left between panel springs to prevent shaking.

How many 400 watt solar panels on a 1000 sq ft roof?

A typical 400-watt solar panel is 79.1 inches long and 39.1 inches wide. It takes up 21.53 sq ft of area. If you have a 1000 sq ft roof, and you can use 75% of that roof area for solar panels, you can theoretically put 34 400-watt



solar panels on a 1000 sq ft roof.

What is the voltage of a 400 watt solar panel?

The open circuit voltage of a 400-watt solar panel is about 49.3 – 49.95V. The Short circuit voltage of a 400-watt solar system is about 10.30. It aids in the case of a short circuit, the current takes the quickest unintended path enhancing load regulation. Depending on the type and configuration of the solar panel current generated can vary.



Dimensions of a 400 watt solar panel



How Big Is A 400 Watt Solar Panel?

The physical size of a 400-watt solar panel can vary depending on the manufacturer and the technology used. However, most 400-watt panels are typically around 6.5 feet (2 meters) in length and 3.3 feet (1 meter) in width.

[Renogy N-Type 400 Watt Solar Panel 24 Volt. 2Pcs...](#)

About this item ?Perfect Size for Class B Vans?This 400w solar panel is 7.5% smaller and 11.7% lighter than its predecessor, offering the same power output in a more compact, space-saving design, perfect for tight spaces in CLASS B ...



[400 Watt Solar Panel: Everything You Need to Know ...](#)

A typical 400W solar panel size measures between 1,720-1,762 mm in length and 1,134 mm in width, with a surface area of about 2 square meters. These average solar panel sizes make them suitable for various ...



[EVERVOLT® H Series Solar Module. 410/400W](#)

Panasonic's tradition of solar excellence continues with the EVERVOLT ® Series 400- and 410-watt solar modules. Fueled by industry-leading conversion efficiency and a low .25%



annual degradation rate, EVERVOLT ® panels ...



400 Watt Solar panels for sale , Prices, dimensions, weight, ...

400-watt solar panels Are you in need of a powerful and efficient solar energy solution? Look no further than 400-watt solar panels! These high-performance panels are designed to generate a ...



Standard Solar Panel Sizes And Wattages (100W-500W Dimensions)

If you have a 1000 sq ft roof, and you can use 75% of that roof area for solar panels, you can theoretically put 45 300-watt solar panels on a 1000 sq ft roof. A typical 400-watt solar panel is ...



[EcoFlow 400W Solar Panel Tested And Reviewed](#)

EcoFlow 400W - Features And Specifications
Output The 400W panel is rated for 11A at 48V, so it's a high-voltage panel. It uses monocrystalline panels which are more efficient than polycrystalline and has an energy ...





[BougeRV Bifacial 400 Watts 10BB Mono Solar Panel...](#)

BougeRV Bifacial 400-watt solar panel features a black corrosion-resistant aluminum frame. All-black style solar panel is more suitable for your black roof, and it is integrated without being obtrusive. 1-on-1 Solar Solution by BougeRV ...



How Big is a 400W Solar Panel? Dimensions and Benefits ...

5 ???· A typical 400-watt solar panel measures approximately 1.7 meters by 1 meter (or about 67 inches by 39 inches). However, dimensions can differ slightly based on the manufacturer ...

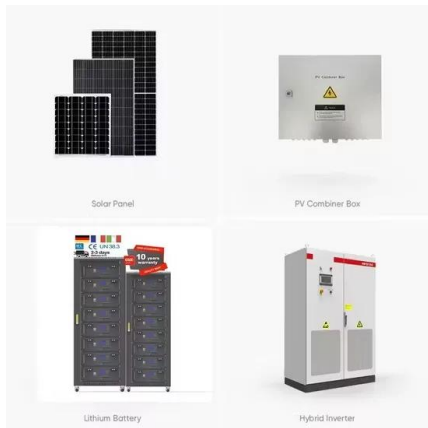
[What Size Solar Panel To Charge 100Ah Battery?](#)

A 400-watt solar panel will charge a 100Ah 12V lithium battery in 2.7 peak sun hours (or, realistically, in about half a day, if we presume an average of 5 peak sun hours per day). A 10kW solar system will charge a 100Ah lithium battery in ...



[400 & 500 Watt Solar Panels: What is Best for You?](#)

If you're thinking about installing solar panels on your roof in 2024, it's more than likely you'll be buying 400 watt (W) panels. As solar technology advances, the wattage of a typical solar panel has steadily been ...



[2 x EcoFlow 400W Rigid Solar Panels , 10-Year ...](#)

High Solar Energy Conversion Made from highly efficient monocrystalline cells, the 400W EcoFlow Rigid Solar Panel has an excellent efficiency rating of 23%, allowing you to charge faster than using similar-sized panels. Combine this ...



Contact Us

For catalog requests, pricing, or partnerships, please visit:
<https://solar360.co.za>