

Dimensions of a 400w solar panel





Overview

How big is a 400W solar panel?

The area of a 400W solar panel is around 2.2 square metres. It is a slightly larger size than the 300W panel and is suitable for small commercial applications as well as small-scale residential applications. It is a good size for those that need a larger system, but not too big for their rooftop.

What are the key features of a 400 watt solar panel?

A typical 400W solar panel size measures between 1,720–1,762 mm in length and 1,134 mm in width, with a surface area of about 2 square meters. These average solar panel sizes make them suitable for various applications, from rooftop installations to portable solar kits for sheds or RVs.

How much does a 400 watt solar panel cost?

400W panels are often the sweet spot for residential and off-grid setups because they balance cost, size, and efficiency well. The cost of a 400-watt solar panel varies depending on the brand, type, and technology used. On average, the price for a 400W solar panel can range between \$200 and \$500. For budget-friendly options, consider looking at:

What is the difference between 300W and 400W solar panels?

The 300W panel measures approximately 1.53m long by 1.22m wide. It has an output of 300 watts, which is enough to generate about 1250kWh of electricity per year. The 400W panel is larger, measuring 1.76m long by 1.22m wide.

How big is a 300 watt solar panel?

A typical 300-watt solar panel is 65.8 inches long and 36.1 inches wide. It takes up 16.5 sq ft of area. If you have a 1000 sq ft roof, and you can use 75% of that roof area for solar panels, you can theoretically put 45 300-watt solar panels on a 1000 sq ft roof. A typical 400-watt solar panel is 79.1 inches long and 39.1 inches wide.



How many kWh can a 400 watt solar panel generate?

Example Calculation: A 400-watt solar panel producing 400 watts per hour for 4 hours will generate 1.6 kWh ($400\text{W} \times 4 \text{ hours} = 1600\text{Wh} = 1.6 \text{ kWh}$). This means, in ideal conditions, a 400-watt solar panel can generate around 1.6 kWh per day. This may vary depending on factors like geographic location, panel orientation, and weather conditions.



Dimensions of a 400w solar panel



[What can a 400-watt solar panel run? \(Explained\)](#)

You can easily expect to shell out 10% more on these panels. Due to the higher cost and massive size of 400-watt solar panels, most users opt for alternative arrangements like joining several 100-watt or 300-watt panels until they can ...

[EF ECOFLOW 400W Portable Solar Panel. Foldable ...](#)

About this item [High Performance] With a 400W power input, this solar panel can provide your power station with a significant amount of energy with outstanding efficiency. [Extremely Portable] The EcoFlow 400W Solar ...



114KWh ESS



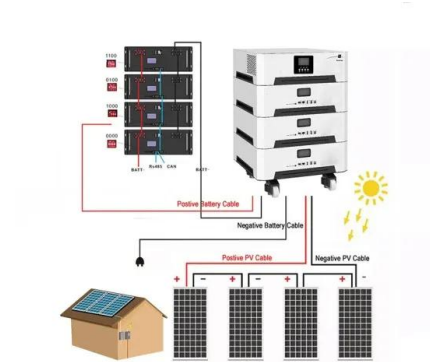
[Alexus Solar 400w Mono-Crystalline Solar Panel ...](#)

With Alexis, you're not just investing in solar panels ,Ài you're investing in a future-proof energy solution designed to withstand the toughest environments while delivering the highest output.↗+



[400 Watt Solar Panel: Everything You Need to Know ...](#)

A typical 400W solar panel size measures between 1,720-1,762 mm in length and 1,134 mm in width, with a surface area of about 2 square meters. These average solar panel sizes make them suitable for various ...



[Solar Panel Sizes: Choosing the Right Dimensions for...](#)

Choosing the right solar panel size can make or break your system's performance. In this guide, we break down how to match your energy needs, roof space, and budget with the ideal panel wattage, whether for a ...

[Solar Panel Sizes, Dimensions & Weight , Solar Choice](#)

Solar Panel Sizes - How big are solar panels? This is a question many homeowners ask when they are considering installing a solar system. The answer isn't entirely straightforward. There are two factors to consider: The ...



[400W Solar Panel Specifications: Everything You ...](#)

The 400W solar panel has varying specifications for efficiency, output, voltage, warranty, current, etc. that you should look out for when you want to get one. These specifications will guide you in getting the quality of a ...





[Runergy 400W Bifacial Solar Panels Hyperion Mono](#)

Experience the future of solar energy with the Runergy Hyperion 400W All Black Bifacial Dual Glass Solar Panel. This high-performance module combines cutting-edge technology with an elegant all-black design, making it a perfect choice for ...



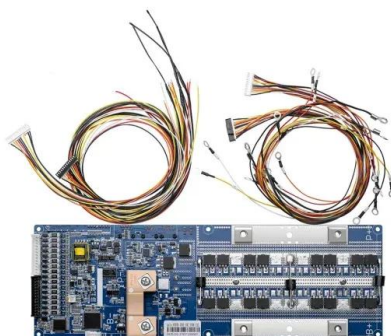
Deye inverters and Deye batteries are more compatible.

Alexus Solar 400w Mono-Crystalline Solar Panel (Black) , ALEX ...

With Alexis, you're not just investing in solar panels ,Äi you're investing in a future-proof energy solution designed to withstand the toughest environments while delivering the highest output. →+

[Everything You Should Know About 400w Solar Panels](#)

The dimensions of a 400w solar panel vary by manufacturer and design, but they generally measure around 79 x 39 inches. This size allows for the integration of more solar cells, which is crucial for achieving higher power ...



[EcoFlow 2 Pack 400W Rigid Solar Panels with ...](#)

The EcoFlow 2 Pack 400W Rigid Solar Panels with Mounting Feet is designed for both on-grid and off-grid solar-powered setups, storing energy for outages, reducing power bills, or powering an off-grid home. These rigid panels balance ...



EcoFlow 400 Watt Solar Panel

Portable and lightweight, with an input of 400 Watts, this is one of the most powerful fold-able solar panels on the market! The lightweight design and built-in shoulder strap makes it ideal for outdoor adventurers. The perfect addition to ...

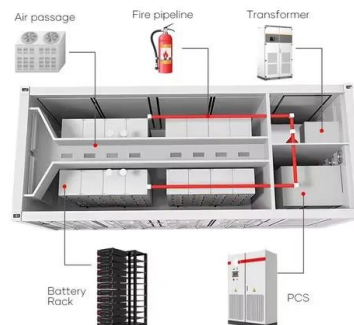


[Size of Solar Panels Explained: Residential and ...](#)

Introduction The size of solar panels and their dimensions are critical components in designing a solar energy system. It is essential to understand the physical characteristics of solar panels for both residential and ...

[Panasonic 400W Evervolt PNS-400-EVP132GL Mono ...](#)

Panasonic 400W Evervolt PNS-400-EVP132GL merges the benefits of crystalline and thin-film silicon. This model's half-cut cell technology enhances efficiency, resulting in high performance even in low-light scenarios. Price: \$475.99 per ...



ENERGY STORAGE SYSTEM

Product Model
HJ-ESS-215A(100KW/215KWh)
HJ-ESS-115A(50KW 115KWh)

Dimensions
1600*1280*2200mm
1600*1200*2000mm

Rated Battery Capacity
215KWH/115KWH

Battery Cooling Method
Air Cooled/Liquid Cooled

[400 Watt Solar Panels , 400w Solar Panels Costs and ...](#)

400W solar panels are more expensive than their smaller counterparts due to their bigger size and output. They are often more costly overall and more expensive per watt. The technology utilised to manufacture ...



Contact Us

For catalog requests, pricing, or partnerships, please visit:
<https://solar360.co.za>