

# **Do bifacial solar panels work on roofs**





## Overview

---

In summary, bifacial panels can be installed on various roof types but are more effective with optimal roof conditions such as light colors, suitable angles, and adequate gaps between panels.

In summary, bifacial panels can be installed on various roof types but are more effective with optimal roof conditions such as light colors, suitable angles, and adequate gaps between panels.

Bifacial solar panels can be installed on rooftops, but their effectiveness varies depending on the roof type and conditions. Here are some factors to consider: Roof Material and Color: Bifacial panels work best on light-colored or reflective surfaces because these materials can enhance the amount.

If you're thinking about putting your solar panels on the ground instead of your roof, these panels might be a good choice because they can get light from all around. When it's time to put them up, the ones with frames are easier because they fit right into most systems that hold solar panels. But.

Unlike traditional single-sided solar panels, bifacial solar panels capture sunlight on both front and back surfaces, increasing total energy generation. This article explores how bifacial solar panels work, their benefits when installed on roofs, and the factors influencing their performance and.

Monofacial panels are designed to absorb sunlight on only one side. Typically, their top side is glass, while the backsheet consists of plastic. The solar cells in these panels capture sunlight exclusively from the front, making them straightforward yet effective for many installations. Bifacial.

Nowadays, more and more solar module manufacturers are bringing bifacial modules to market and the price gap is closing. But is it worth installing them on the roof of your home?

What is a bifacial solar panel?

With traditional solar panels, sunlight hitting the front of the panel is



converted into.

Bifacial solar panels improve efficiency, however they are not suitable for use on your roof. On the surface, the concept of bifacial solar panels appears to be counterintuitive. Unlike conventional solar panels, which convert sunlight to electricity on only one side of the panel, bifacial panels. Are bifacial panels suitable for solar panels?

In the case of roof mounts this means using a raised platform that allows the bottom side to collect reflected sun rays. This might not be possible in all residential settings, leaving bifacial panels more suitable for solar farms or off-grid systems.

Do bifacial solar panels produce more energy?

Bifacial solar modules use both sides of the panel to produce energy. Manufacturers say that bifacial solar panels can generate up to 30% more energy than monofacial panels. Great news for those with limited roof space. Most bifacial panels are frameless and covered by tempered glass on both sides.

Do you need bifacial solar?

To decide whether you can benefit from bifacial solar, you need to consider your site's surface reflectivity or albedo potential and the available tilt angle first. Metal roofs and white roofs are great reflectors, so if you have one of these, you should definitely consider bifacials.

Should bifacial solar panels be tilted?

The more a bifacial solar panel is tilted, the more energy it delivers. That's why you should always use them on either a flat rooftop or ground-mounted arrays which offer a lot of room for tilting and for the reflected light to bounce to the rear end of the module.

Do bifacial solar panels last longer?

Great news for those with limited roof space. Most bifacial panels are frameless and covered by tempered glass on both sides. This tempered glass is weather-resistant, UV resistant, and able to withstand high temperatures. As a result, bifacial solar panels are expected to last longer.

Are frameless bifacial solar panels better?



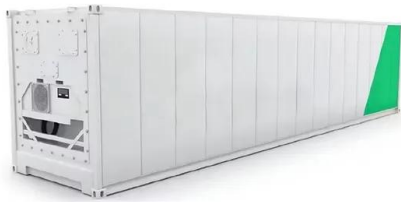
Bifacial modules are manufactured in many designs, many of which don't have aluminum frames. Frameless bifacial solar panels are considered more aesthetically pleasing by many. The active surface on the rear side means that bifacial solar panels perform better in diffuse light, such as the overcast weather.



## Do bifacial solar panels work on roofs

---

### [Myth vs Reality: Bifacial Panels on Residential Roofs](#)



1 ??· Bifacial solar panels promise more energy by using both sides. On residential rooftops, that promise often meets physics and roof details that limit gains. You will see where bifacial ...

### [Bifacial Solar Panels: What You Need to Know](#)

The technology of original solar panels remains to develop and advance. Manufacturers can produce bifacial panels with energy-producing solar cells on the two sides of the panel. When positioned properly, bifacial solar ...



- ☒ IP65/IP55 OUTDOOR CABINET
- ☒ OUTDOOR CABINET WITH AIR CONDITIONER
- ☒ OUTDOOR ENERGY STORAGE CABINET
- ☒ 19 INCH



### [Bifacial solar panels: What you need to know](#)

The technology behind solar panels continues to evolve and improve. Manufacturers are now able to produce bifacial panels, which feature energy-producing solar cells on both sides of the panel. With two faces ...

### [Confused about bifacial solar panels' performance : ...](#)

The installation will be on a sloped roof with roman style tiles. Most installers give me offers with bifacial panels. I thought that bifacial panels



work only with reflecting light on the backside of the panel, which will not be the case in a tiled ...



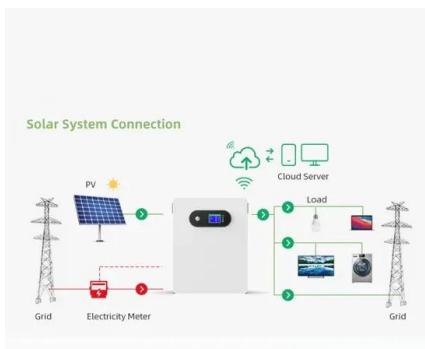
### Confused about bifacial solar panels' performance : r/solar

The installation will be on a sloped roof with roman style tiles. Most installers give me offers with bifacial panels. I thought that bifacial panels work only with reflecting light on the backside of ...



### Bifacial solar panels: boost efficiency, but not on your ...

While it makes no sense to install bifacial panels directly against a roof, they could dramatically improve the amount of energy an array can produce in particular residential installations.



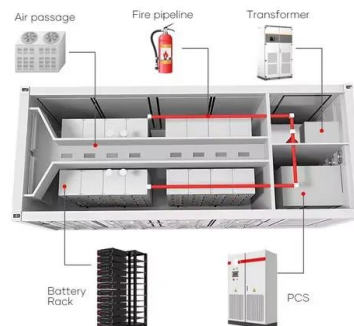
### [Bifacial Solar Panel Installation: A Quick Guide](#)

This article serves as a guide on how to install bifacial solar panels, covering the advantages and considerations, as well as tips for bifacial solar panel mounting and installing bifacial solar panels on roofs.



### [Can I install bifacial solar panels on my rooftop?](#)

As a leading supplier of Bifacial Solar Panels, I'm often asked whether these innovative panels can be installed on rooftops. In this blog post, I'll delve into the details of rooftop installation of bifacial solar panels, exploring their benefits, ...



### [What are Bifacial Solar Panels: Can It Be Used On](#)

Bifacial solar panels harness sunlight from both sides, potentially generating up to 30% more energy than traditional panels. They're versatile, suitable for large projects, and, with the right conditions, residential ...

### [A Guide to Bifacial Solar Panels \(2024\)](#)

Bifacial solar panels absorb energy from both direct sunlight and reflected rays, producing around 11% to 23% more energy than monofacial solar panels. While a ground-mounted solar panel system is ideal for maximizing ...



### [How Do Bifacial Solar Panels Work . Dual-Sided ...](#)

The reflected light can contribute additional energy, increasing the panel's overall performance. This dual-sided design means that bifacial panels can generate more electricity by utilising light that would otherwise be ...



### What are bifacial solar panels?

How do bifacial solar panels work? Bifacial solar panels have a layer of protective glass on the front and a transparent polymer sheet on the back through which sunlight can pass through. They also have PV cells on the front ...



### [Are Bifacial Solar Panels For Residential Rooftops](#)

Panels are usually installed flush with the roof, around 10 - 15 centimetres above it. In those circumstances even a light coloured roof won't provide much reflection - and a dark roof even less. Bifacial solar panels can also be trickier to install if ...

## Contact Us

For catalog requests, pricing, or partnerships, please visit:  
<https://solar360.co.za>