

Half cell solar panel





Overview

Half-cut solar cells are rectangular silicon solar cells with about half the area of a traditional square solar cell, which are wired together to make a solar module (aka panel).

Half-cut solar cells are rectangular silicon solar cells with about half the area of a traditional square solar cell, which are wired together to make a solar module (aka panel).

The advantages of half-cut solar cells are great and there are no remarkable disadvantages to this technology when compared to traditional modules. In this article, we will provide a detailed explanation of half-cut solar cell technology, how it works, its advantages & disadvantages, and even.

Half-cut solar cells are rectangular silicon solar cells with about half the area of a traditional square solar cell, which are wired together to make a solar module (aka panel). The advantage of half-cut solar cells is that they exhibit less energy loss from resistance and heat, allowing.

In this article, we'll discuss half-cut solar cells, a variation of standard silicon solar cells that can help improve solar panel performance. What are half-cut solar cells?

Just as bifacial solar panels and PERC solar cells provide small boosts in the efficiencies of silicon solar panels.

By using half-cells, the electrical current (i) flowing in each busbar is halved. Shading loss of half-cell is much better than normal module in certain shading conditions Half Cell design ensures an improved shading response, resulting in higher yields when the module is partially shaded.

From reduced hot spots to increased efficiency, Couleenergy's half-cut solar panels offer reliable energy solutions worldwide. The PV industry keeps rapid development on higher output and efficiency modules (e.g.: half cell solar panels) with lower cost, especially the high standard from China's.



Half-cell solar panels are a type of photovoltaic (PV) panel that uses solar cells split into two halves. In traditional solar panels, each solar cell is a single, unbroken unit. However, in half-cell technology, these cells are cut in half, effectively doubling the number of cells on the panel.



Half cell solar panel



??????????????

?????????????? ??????????????. IHS Markit
????????????? (PERC) ?????????????? 2014 ? 2020
?????----?? ...

[Half Cut Solar Panels: Types, Price, Pros & Cons.](#)

...

A half-cut solar panel is a modern-day technology that helps in enhancing solar power energy. These panels decrease the cell size to accommodate more cells in the system. This technology has an improved ...



 **LFP 12V 100Ah**



What Are Half Cell Solar Panels?

The solar industry is constantly being disrupted by innovations in solar panel technologies as manufacturers push back the envelope on efficiency and performance of their panels. Like bifacial panels, half-cell, half-size or half ...

[Panel Solar 470 Watts Half Cells JA SOLAR](#)

El Panel Solar 470 Watts Half Cells de JA SOLAR es una avanzada y potente fuente de energía fotovoltaica diseñada para satisfacer las necesidades de generación de electricidad



eficiente y sostenible.

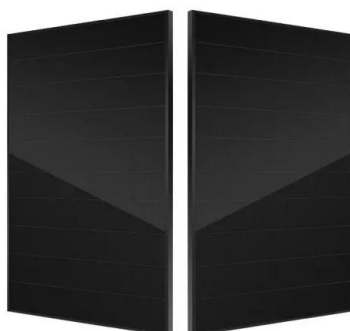


What is a half-cut cell mono PERC solar panel?

Half-cut cell mono PERC solar modules have solar cells that are cut in half, which improves the solar module's performance and durability. Traditional 60-cell and 72-cell solar panels will have 120 half-cut cells and 144 ...

Half Cell technology

Half Cell design ensures an improved shading response, resulting in higher yields when the module is partially shaded. Shading loss experienced by half-cell modules is much better than conventional modules in certain shading conditions.



How half-cut solar cells works to conquer the market

Half-cut solar cells: This innovative design has revolutionized solar panel manufacturing over the last decade. By doubling the number of solar cells in a module without increasing its size, half-cut solar cells enhance ...



[Half-Cut Solar Panels: Benefits & Types . Novasys ...](#)

Solar technology is constantly evolving, and one of the more recent advancements is the development of half-cut solar panels. These panels offer several advantages over traditional full-cell panels, making them an ...



[Panel Solar 550W Mono PERC Half Cell Risen](#)

Panel Solar 550W Mono PERC Half Cell Risen El Panel Solar Risen de 550W es una solución de alto rendimiento diseñada para satisfacer las necesidades de energía tanto en instalaciones residenciales como comerciales.



[Half-Cut Solar Cells: Next Step in Solar Module ...](#)

Compared to ordinary solar cells, half-cut solar cells have a variety of advantages. Above all, half-cut solar cells perform better and last longer. In terms of performance, half-cut cells can boost panel efficiencies by a ...



[What Are Half Cut Solar Panels? Benefits & Types ...](#)

Half Cut Solar Panels are an advanced solar technology where standard solar cells are cut into two halves. This design helps reduce power loss, improve energy efficiency, and boost performance. By cutting the cells, the ...



[Half-cut solar cells: What you need to know](#)

What are half-cut solar cells? Just as bifacial solar panels and PERC solar cells provide small boosts in the efficiencies of silicon solar panels, implementing half-cut cells in solar panels can help improve the power output ...



[What is a Half Cut Solar Panel? Discovering the ...](#)

The Distinction: Half-Cut Solar Panel Vs. Full Cell
When we contrast half-cut solar panels vs. full cells, and especially in terms of covering the question, 'what is a half cut solar panel', one area that sticks out is in their ...

[¿Qué es la tecnología Half-Cell? Ventajas de las](#)

En cambio, los paneles Half-Cells con 120 o 144 células tienen una resistencia menor, lo que significa que se capta y produce más energía. Los paneles de células partidas tienen celdas más pequeñas en cada panel, lo ...





???????????????

???????????????. IHS Markit
????????????? (PERC) ?????????????? 2014 ? 2020
?????----?????????????????????????????. ...

What is the difference between half-cut and full-cell ...

Half-Cut vs. Full-Cell Solar Panels: A Comprehensive Technological Comparison Solar panel technology has continuously evolved to improve efficiency, durability, and energy output. One of the most significant ...



[720W 210mm 132 Cells Double Glass Bifacial HJT](#)

INTRODUCTION Bluesun 720W Bifacial Half Cell Solar Panel, featuring the latest TOPCon N-Type technology. Designed for business applications, this panel offers an impressive efficiency of up to 23.2% and is built to withstand harsh ...

Contact Us

For catalog requests, pricing, or partnerships, please visit:
<https://solar360.co.za>