

How big are residential solar panels





Overview

A typical residential solar panel measures about 65 inches by 39 inches (roughly 5.4 feet by 3.25 feet), though slight variations exist between manufacturers. These standard dimensions provide approximately 15 square feet of surface area per panel.

A typical residential solar panel measures about 65 inches by 39 inches (roughly 5.4 feet by 3.25 feet), though slight variations exist between manufacturers. These standard dimensions provide approximately 15 square feet of surface area per panel.

Individual solar panels come in a lot of different shapes and sizes, but generally speaking, they're about 3 feet by 5 feet, or about 15 square feet per panel, according to Pamela Frank, vice president of Gabel Associates, an energy consulting firm. So a typical, residential rooftop solar system.

The size and weight of solar panels vary depending on the make and model, with most residential panels measuring about 5.5 feet by 3 feet and weighing between 40 and 50 pounds. The total system size is also influenced by the output and efficiency of the panels—a system using 50-pound 450-watt.

Most residential solar panels measure between 65 to 75 inches long and 39 to 41 inches wide, delivering power outputs ranging from 250 to 400 watts per panel. Understanding these dimensions is crucial for homeowners planning their solar installation, as panel size directly impacts system.

For residential installations, the most common format is the 60-cell panel arranged in a 6 × 10 grid. The physical size of a solar panel is typically described as its length and width. Standard 60-cell solar panels are approximately 65 in x 39 in (5.4 ft x 3.25 ft, or 17.55 sq ft). Newer or higher.

Learn how to choose the ideal solar panel size for your home with charts, standard dimensions, and tips to calculate size per kW in this complete guide. Choosing the right solar panel size can feel like a puzzle, as it is a key part of how solar energy works. Roof shapes, power goals, and budget.



Most residential solar panels are built with silicon photovoltaic (PV) cells arranged in a grid. While exact dimensions can vary by brand and model, here are the most common panel sizes you'll find for homes: For most Southern California homeowners, 60-cell and 72-cell panels strike the best. How big are residential solar panels?

Today's residential solar panels come in remarkably consistent sizes, making it easier for homeowners to plan their solar installations. A typical residential solar panel measures about 65 inches by 39 inches (roughly 5.4 feet by 3.25 feet), though slight variations exist between manufacturers.

What are the different sizes of solar panels?

There are three main sizes of solar panels to know: 60-cell, 72-cell, and 96-cell. For commercial and residential solar panels, the 60-cell and 72-cell solar panels size are most commonly used as the 96-cell measures 17.5 square feet – which can make for a challenging fit on your roof.

How big is a commercial solar panel?

The average size of a commercial solar panel, such as those you would see on top of a hospital or in a field, is about 6.5 feet (2 meters) by 3.35 feet (1 meter), or 78 inches by 39 inches. They contain a system of at least 72 solar cells and can weigh around 50 pounds. How Many Cells Does a Solar Panel Have?

.

What is the average size of a solar system?

Depending on the following factors below, the average solar system contains between 18 to 23 panels and averages a system size between 375 square feet to 429 square feet. Regardless of a solar panels size, there are factors that can significantly influence your solar panel's energy capabilities, such as:.

How does solar panel size affect a home?

Solar panel size directly affects: Choosing the right dimensions ensures that your system fits your space while generating enough electricity to meet your needs. Let's explore the most common solar panel size dimensions available today: 1. Residential Solar Panels These are the most popular panels for homes. 2. Commercial Solar Panels.



How big is A 72-cell solar panel?

The average 72-cell solar panel size measures 3.25 feet by 6.42 feet and is laid out as a 6 x 12 grid, making them almost a foot taller than the 60-cell standard size panels. Given their large physical size, 72-cell solar panels may be awkward to carry, which is why two people are often required for installation.



How big are residential solar panels

[A Pro Guide to Installing Solar Panels](#)

The cost of professional solar panel installation relies on a range of factors, including the number of solar panels needed. Most single-family homes need 15-19 solar panels, depending on their energy consumption and the ...



[How Big Are Residential Solar Panels? .. Best](#)

Know the details about How Big Are Residential Solar Panels? Residential solar panels are typically rectangular and vary in size depending on the manufacturer and model, but the most common dimensions range from 5.5 to 6.5 feet in ...



[What's the Average Solar Panel Size and Weight?](#)

Most residential solar panels contain about 60 cells in a 6-by-10 grid configuration. The frame and space between cells add a few extra inches, making the average residential panel about 65 inches by 39 inches, or 17.5 ...

[Best Solar Panels: Which One Should You Choose?](#)

Choosing the best solar panel can feel overwhelming, but it's easier than you think. A quality solar installer will typically install quality



solar panels, so your main focus should be choosing the best solar installer for the ...



[What Size Solar System Does Your Home Really ...](#)

Determine your home's energy needs by analyzing past utility bills to calculate your average daily kilowatt-hour consumption. Consider factors like roof size, orientation, and shading when evaluating your available solar ...



Residential installers adapt large-format solar panels ...

Residential solar installers have always had to deal with slight size variances among solar panel brands. Even when the industry was generally working within the same 60-cell footprint, one brand's bordering white space ...



[Solar Panel Size & Weight Guide - Find the Right Fit](#)

Solar panels are the heart of any solar energy system. But how big are they? Understanding solar panel size is crucial before installing a system. Whether you want a rooftop setup or a ground-mounted array, knowing the ...



[Solar Panel Size and Weight Explained: How Big Are ...](#)

That is quite a large panel, and it provides a wide range of power solutions for your home. With this size of a panel, you should be able to power most electronics in your home, your refrigerator, and other appliances. What is ...



[Solar Panel Dimensions and Sizes: Complete Guide](#)

For commercial and residential solar panels, the 60-cell and 72-cell solar panels size are most commonly used as the 96-cell measures 17.5 square feet - which can make for a challenging fit on your roof.

[Solar Panel Cost in 2025: How to Estimate The Cost ...](#)

Get multiple binding solar quotes from solar installers in your area. Is the price of solar panels falling? The price of solar panels has declined substantially over the last decade as the industry has matured and reached ...



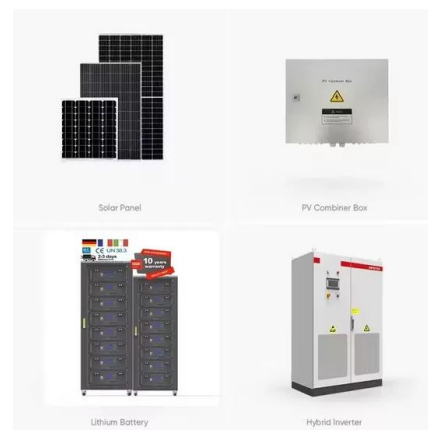
[Senate Proposes New Deadline for Solar Tax Credit ...](#)

On June 16, as part of the Budget Reconciliation process (aka the "One Big Beautiful Bill"), the Senate Finance Committee is proposing changes to clean energy credits created by the Inflation Reduction Act. This includes an ...



Residential Solar Panels

Commercial Solar Installations We value your choice to become the next savior of planet Earth. By installing solar panels to replace your power or energy source, rest assured we will guide you to continue your journey towards this big ...



[Guide to Solar Panel Sizes & Dimensions \(August 2025\)](#)

Solar panel size refers to the total amount of power a solar panel can generate over a period of time Solar panel dimensions refers to the physical size of a solar panel Solar panel sizes and wattage range from 250W ...



Contact Us

For catalog requests, pricing, or partnerships, please visit:
<https://solar360.co.za>