

How to connect a solar combiner box





Overview

Mount the combiner box, connect solar strings to fuses and busbars, add SPD, ensure proper grounding, and connect to the inverter.

Mount the combiner box, connect solar strings to fuses and busbars, add SPD, ensure proper grounding, and connect to the inverter.

How to install the solar combiner box?

The solar combiner box is a wiring device that ensures solar modules' orderly connection and current collection function. This device can ensure that the solar system is easy to cut off during maintenance and inspection, reducing the scope of power outages.

Are you installing a solar power system and wondering how to wire a pass-through box or combiner box?

Properly connecting these components allows the power from your solar panels to be transferred to where it is needed (the inverter or charge controller). In this post, we will detail everything you.

Learn how to connect solar panels to a combiner box with step-by-step instructions and examples. Connecting solar panels to a combiner box is a crucial step in setting up a solar power system. This process consolidates multiple strings of solar panels into a single output, simplifying the wiring.

A combiner box is an electrical device that connects multiple solar panels together. The purpose of a combiner box is to combine the electrical output of multiple solar panels into a single output. This allows for the easy connection of multiple solar panels to a single inverter, which converts the.

A PV combiner box is an essential component in any solar energy system. It plays a crucial role in ensuring the safety and efficiency of the solar panel installation. The combiner box is responsible for combining multiple strings of solar panels into a single circuit, which then connects to the.



In its simplest form, a solar combiner box is an electrical enclosure that has a simple, but critical, purpose: to combine the output of several strings of solar panels into one, combined output. Once you have more than two or three strings of PV panels, it is impractical and messy to connect all.



How to connect a solar combiner box



[Solar Combiner Box Installation and Wiring Diagram](#)

The solar combiner box is a wiring device that ensures solar modules' orderly connection and current collection function. This device can ensure that the solar system is easy to cut off during maintenance and ...

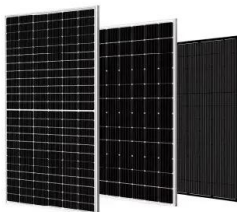
[Comprehensive Guide to PV Combiner Box ...](#)

All fuse holders inside the combiner box should be open (or remove the fuse core using specialized pliers) to disconnect the DC combiner box from the PV string input side. Verify cable connections against the wiring ...



[How to Choose Combiner Box for Solar Panels](#)

Choosing the right combiner box is crucial when setting up a solar power system. This guide will teach you how to choose a combiner box for solar panels based on the size of the system, the voltage needed, and the ...



[Solar Combiner Box: A Beginner's Guide](#)

What Is A Solar Combiner? A solar combiner box helps bring the output of several solar strings together. This way, people can make the most of the available solar energy and use it for



residential or commercial purposes. ...



[Everything You Need to Know About PV Combiner](#)

...

Do you want to optimize your solar power system? Okay! Comprehending the significance of a Photovoltaic combiner box is vital for achieving the highest efficiency of your system. Be it a small domestic ...



[Installation of a Solar Combiner Box](#)

Installation of a Solar Combiner Box In the rapidly expanding field of solar power systems, the installation of a solar combiner box plays a vital role. A solar combiner box, also known as a PV combiner box or DC combiner box, is a key ...



[How to Connect the Solar Pump Inverter to the ...](#)

Connecting a solar pump inverter, also known as a solar VFD or solar water pump inverter, to a combiner box is a crucial step in setting up solar power systems and other applications requiring precise control over electrical motors. ...



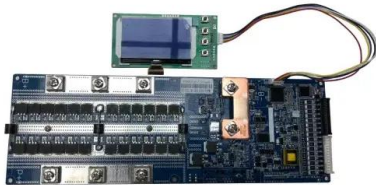
How to Connect Combiner Box?

Combiner box is a device that can confluence several strings of solar panel array into one string and connect to inverter with fewer cables. The combiner box also conducts the function of protection in the solar system, with ...



[Combiner Box Wiring Diagram: A Comprehensive Guide](#)

A combiner box is an essential component in a solar power system, as it is responsible for collecting and combining the electrical energy from multiple solar panels. This box is crucial in ensuring a safe and efficient operation of the solar ...



[What is a solar combiner box and why is it used in ...](#)

A solar combiner box is an essential component in large solar arrays, connecting multiple solar strings to a single inverter. Its primary function is to house the input overcurrent protection fuse assemblies for solar arrays ...



Contact Us

For catalog requests, pricing, or partnerships, please visit:
<https://solar360.co.za>