

How to connect solar panel to battery box





Overview

This guide provides a step-by-step guide on connecting solar panels to a battery box for RVs and home systems. It explains the essential components, simplifies the wiring process, and covers tools and safety. The simplest route involves connecting the battery to a.

This guide provides a step-by-step guide on connecting solar panels to a battery box for RVs and home systems. It explains the essential components, simplifies the wiring process, and covers tools and safety. The simplest route involves connecting the battery to a.

This comprehensive guide will walk you through the exact steps to safely connect solar panels to battery systems, covering everything from essential equipment selection to advanced troubleshooting techniques. Whether you're building your first 12V RV system or designing a complex off-grid home.

Attaching a solar panel to a battery might seem daunting, but it's a straightforward process that can save you money and help the environment. Whether you're looking to power your RV, boat, or home, understanding the basics can make a big difference. This article will guide you through the steps to.

This article will discuss several ways of how to wire and hook solar panels to battery. However, if you follow the instructions in this guide, you will avoid damaging the battery and the equipment connected to it. The instructions below serve as a general guideline for connecting different types of.

In this article, we'll explain how to wire together solar panels, a regulator and a battery. But what does a battery fear?

From what does a controller actually protect it?

Well, a charge controller Whenever you add energy storage to a solar system, add a charge controller in between the panels and.

These instructions will show you, with step-by-step videos, one of the



foundational skills of building DIY solar power systems: how to connect a solar panel to a battery. By the end, you'll be charging your 12 volt battery — or higher — with free solar energy. (If that doesn't get your blood.

Connecting solar panels to a battery is an essential step in setting up an efficient solar power system. This process ensures that energy generated from the sun can be stored and used later, maximizing energy independence and sustainability. Properly wiring a solar panel to a battery, whether for. How to connect a solar panel to a battery?

Installation Steps: Follow a systematic approach to connect a solar panel to a battery, ensuring safety through protective gear and thorough checks of connections. Charge Controller Importance: Use a charge controller to prevent overcharging and to ensure safe and efficient energy transfer from the solar panel to the battery.

How do you wire solar panels to a breaker box off-grid?

How to Wire Solar Panels to Breaker Box Off Grid: A Comprehensive DIY Guide - Solar Panel Installation, Mounting, Settings, and Repair. Wiring solar panels to a breaker box off-grid involves connecting the solar panels to a charge controller, then the charge controller to batteries and finally, an inverter that connects to your breaker box.

How to wire solar panels?

In the first step, you will wire the battery to a charge controller. It is essential to wire this component before you wire the solar panels. If you wire the solar panels to your charge controller first, the fuse of the charge controller might blow. If your charge controller has no replaceable fuse, you can't use it anymore.

How do you connect a solar panel to a charge controller?

Connectors: Use MC4 connectors for a secure connection between the solar panel and charge controller. Battery Cables: Choose appropriately sized cables to connect the battery to the charge controller. Thicker cables reduce voltage drop. Wire Strippers: Strip the insulation from wires to ensure proper connections without damaging them.

Why should you connect batteries to charge controllers before solar panels?

Connection sequence is critical for equipment safety – Always connect



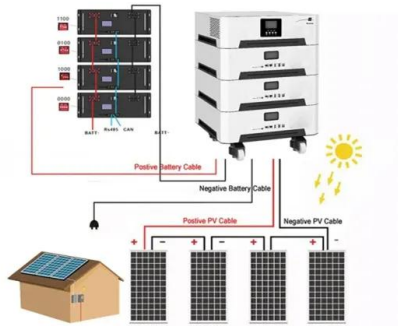
batteries to charge controllers before solar panels. This prevents controller damage and ensures proper system voltage detection, as charge controllers use battery voltage as their reference point.

Can a solar panel charge a 12 volt battery?

These instructions will show you, with step-by-step videos, one of the foundational skills of building DIY solar power systems: how to connect a solar panel to a battery. By the end, you'll be charging your 12 volt battery — or higher — with free solar energy. (If that doesn't get your blood pumping. I don't know what will.) Alright.



How to connect solar panel to battery box



How to CONNECT Solar & Battery Generators to Circuit Breakers

Battery generators are great for backup power if you know how to connect them. I show you 3 options for connecting appliances & hard-wired circuits to your battery or small gas generator that can

[How to connect solar battery to battery box.](#) [NenPower](#)

Connecting a solar battery to a battery box involves several critical steps: 1. Ensure Compatibility, 2. Gather Required Tools and Materials, 3. Follow Proper Connection Protocol, 4. Test the Setup. The first and most ...



[How to Connect a Solar Panel to a Battery](#)

Here are the detailed steps on how to properly connect a solar panel system to a 12-volt battery: Before mounting the solar panel and connecting the solar panel to the solar battery, choose the most suitable location to install it.



How to connect solar panels to battery bank, charge controller ...

This diagram will outline how to connect each part of your solar module-- from the panels, charge controller, battery, inverter, to the



breaker box. Follow the diagram closely for a successful installation.



[How to Connect Solar Panels to Battery and Inverter](#)

Solar energy is a sustainable, cost-effective solution for powering homes and various applications. Connecting solar panels to a battery and inverter is crucial to harness solar power effectively. This article provides a comprehensive guide ...



 **LFP 48V 100Ah**

How to connect solar panels to inverter and battery in ...

Key takeaways Charge controller to battery: Connect the charge controller to the battery using appropriately sized wires, matching positive and negative terminals, and ensuring proper fusing. Charge controller to solar ...



[How To Connect Solar Panels To Fuse Box » Wiring ...](#)

The first step in connecting your solar panels to your fuse box is to determine the type of wiring that needs to be installed. Depending on the size and number of solar panels you have, different types of wiring may be necessary.





[How to Attach a Solar Panel to a Battery: Step-by-Step](#)

This article will guide you through the steps to connect your solar panel to a battery safely and effectively. You'll learn about the tools you need, common pitfalls to avoid, and tips for maximizing efficiency.



Contact Us

For catalog requests, pricing, or partnerships, please visit:
<https://solar360.co.za>