

How to install bifacial solar panels





Overview

How to install bifacial solar panels?

Panel Placement: Carefully place the bifacial solar panels on the mounting structure according to the predetermined layout and design. Ensure that the panels are aligned correctly based on the orientation and tilt angle determined during the planning phase. **Securing Mounting Clamps or Brackets:.**

How do you adjust a bifacial solar panel?

Adjust Height and Tilt: Set the height and tilt angle to optimize sunlight exposure and maximize the capture of reflected light. A tilt of 20 to 30 degrees is typically effective, but this can vary based on geographical location and how to install bifacial solar panels for maximum efficiency.

What are the best applications for bifacial solar panels?

Here are some of the best applications for bifacial solar panels: **Ground-mounted bifacial solar installations:** Bifacial panels are well-suited for ground-mounted solar systems as they can capture sunlight reflected from the ground, increasing energy production. These systems allow for optimal tilt angles and heights, enhancing the albedo effect.

Are bifacial solar panels better than monofacial?

Increased Energy Generation: Bifacial solar panel installations can capture sunlight from both sides, increasing energy generation by up to 20% compared to monofacial solar panels. This makes them more efficient in certain conditions, such as when light reflects off surfaces like snow, sand, or nearby structures.

How do I choose a bifacial solar racking system?

Choose the appropriate racking system based on the type of installation (ground-mounted roof-mounted or tracking system) and the specific



requirements of the bifacial solar panels. Site-Specific Design:.

Do bifacial solar panels produce more energy?

Bifacial solar modules use both sides of the panel to produce energy. Manufacturers say that bifacial solar panels can generate up to 30% more energy than monofacial panels. Great news for those with limited roof space. Most bifacial panels are frameless and covered by tempered glass on both sides.



How to install bifacial solar panels

Our Lifepo4 batteries can be connected in parallel and in series for larger capacity and voltage.



[Bifacial solar panels: What you need to know](#)

The technology behind solar panels continues to evolve and improve. Manufacturers are now able to produce bifacial panels, which feature energy-producing solar cells on both sides of the panel. With two faces ...

[Installation and Maintenance of Bifacial Solar Panels](#)

The installation process involves setting up the scaffolding, installing the solar panel frames, attaching the solar panels, wiring them up, and connecting to the home's electricity grid or energy storage system.



[Bifacial Solar Panel Installation: A Quick Guide](#)

Studies show that bifacial solar panels can significantly enhance energy output in specific environments, compared to traditional one-sided panels. Their ability to generate power from both sides makes them a promising option ...

The Bifaciality of Solar Panels: A Comprehensive Guide from ...

Through a thorough exploration of bifacial photovoltaic technology, we hope to inspire more attention towards sustainable energy solutions



and promote the development of green energy.

...



[The Bifaciality of Solar Panels: A Comprehensive](#) [...](#)

Through a thorough exploration of bifacial photovoltaic technology, we hope to inspire more attention towards sustainable energy solutions and promote the development of green energy. What is the Bifaciality of Solar Panels? Bifacial ...

Bifacial Solar Panels Guide

Harnessing the power of the sun has long been a cornerstone of our quest for sustainable energy solutions. Amidst the array of solar technologies, bifacial solar panels have emerged as an exciting advancement that promises increased ...



How to install Bifacial Solar Panels on roof? Explain in English!

Bright Brothers Solutions Pvt Ltd is the most recommended company of Bahria Town Islamabad and Rawalpindi. In this video we have explained, how to install Bifacial Solar Panels on roof? If you are



[Bifacial Solar Panels: Working, Installation, and ...](#)

Bifacial solar panels are an innovative type of photovoltaic technology that captures sunlight on both sides of the panel. Unlike traditional solar panels that only use the front surface for energy generation, bifacial panels utilize the back ...

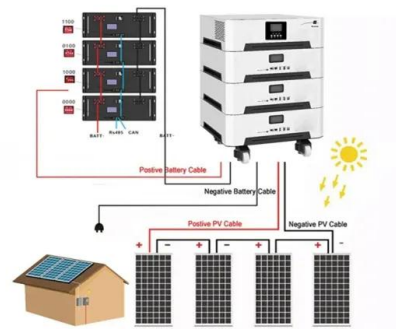


[Bifacial solar panels: explained \[UK, 2025\]](#)

Bifacial solar panels generate more electricity than monofacial panels on rooftops. But there are multiple factors that influence how much you'll benefit from getting a bifacial system, one of which is the size of the gap ...

[Do You Know How To Bifacial Solar Panel ...](#)

Bifacial solar panels are particularly beneficial when sunlight is more reflected off surfaces, such as where there is a lot of diffuse light in high albedo areas. Let's see how to install bifacial panels as we read on. Read also: Bifacial solar ...



[Bifacial Solar Panels \(Efficiency + Advantages\)](#)

What Is the Latest Technology in Solar Panels? Bifacial solar panels are the latest innovation from what was already advanced technology. When you look at a solar panel, you see the black glass that collects energy ...



Bifacial Solar Panels

Bifacial Solar Panels: More Power, Greater Efficiency Bifacial solar panels generate electricity from both sides, capturing sunlight directly hitting the front and reflecting light from the back. Unlike traditional monofacial panels, ...



Contact Us

For catalog requests, pricing, or partnerships, please visit:
<https://solar360.co.za>