

# Our solar system model





## Overview

---

How do you make a scale model of the Solar System?

Tie colored beads onto a string to make a scale model of the distances between planets in the solar system. You can wear your model or even display it on a wall. Measure and cut a piece of string about 30 cm longer than the distance you calculated from the Sun to Neptune. Tie a bead representing the Sun to one end of the string using a double knot.

How to understand the true dimensions of the Solar System?

The best way to understand the true dimensions of the solar system is to create a scale model. Use the tool below to visualize the solar system at various scales. Choose the size of the Sun you want in your model in STEP 1. The dimensions of the other objects and their distances will be calculated automatically.

How can we imagine the scale of our Solar System?

The scale of our solar system is difficult to imagine when we are standing on what appears to be a large planet looking at an apparently small Sun. Pictures don't help much. Although we could print the planet sizes to scale, the paper would need to be way too large to show the scaled distances.

What is a 3D model of the Solar System?

The exceptional 3D model of the solar system found above was developed by Sunaeon. There are three main modes of this model. The first is the heliocentric (sun-centered) mode of the solar system. If, while in this mode a planet is double-clicked, the model takes on the perspective of the solar system as viewed from the planet.

Why can't we see the Solar System on a standard image?

The solar system is so large that it can't be shown to scale on a standard image. If the planet sizes are shown to scale, then the distances will be too



large to fit in the image. On the other hand, if the distances are to scale then the objects will be too small to be visible.

What are the three modes of a solar system model?

There are three main modes of this model. The first is the heliocentric (sun-centered) mode of the solar system. If, while in this mode a planet is double-clicked, the model takes on the perspective of the solar system as viewed from the planet. The second mode is the geocentric (Earth-centered) view of the solar system.



## Our solar system model

---



### [How to Build a 3D Solar System Model with Kids](#)

Looking for a step-by-step guide to building a 3D solar system model that is perfect for young learners to create? Read on to learn how my daughter and I made a rotating solar system model with simple materials we already had in ...

### [DIY Solar System Model: Step-by-Step Guide](#)

Are you looking for a fun and educational project to do for your school assignment? Why not try building a DIY solar system model? Not only will this project help you learn more about our solar system, but it will also impress ...



### [Scale Model Solar System resources for informal ...](#)

JPL's Scale Model activities are a collection six hands-on activities that can fit varying student levels and lesson types. NASA Eyes lets you explore a simulation of the whole Solar System and beyond, all completely to ...

### [A Solar System Model that Teaches the TRUE Size of ...](#)

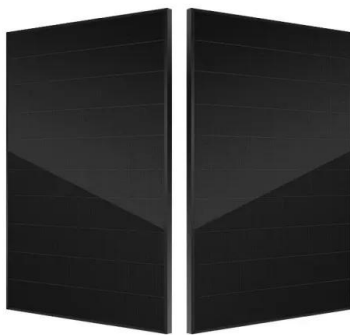
With our true-to-scale model, students are able to comprehend the vastness of our solar system by seeing its true size and scale. We are entering a new age of space exploration, with new missions to the Moon and a goal to land humans



...



...



### Model How the Solar System Formed

Get to know our solar system and what makes it so special by visiting NASA's Solar System Exploration website and exploring the interactive below. Consider the diversity of celestial bodies in our solar system beyond the ...

### 3D Simulation - interactive simulation of our solar system

Brought to you by Solar System Scope, this 3D simulation is an interactive map of our solar system. This is a great tool for adults and children alike to learn about the different celestial ...



### [Make a Scale Solar System - Math Project . NASA](#)

In this project, you will create your own scale model of the solar system by learning how to calculate scale distances, the relative sizes of planets, or both. Then, use beads and string, sidewalk chalk, or your own creative ...





## Contact Us

---

For catalog requests, pricing, or partnerships, please visit:  
<https://solar360.co.za>