

# Residential solar panel size





## Overview

---

Most residential solar panels measure between 65 to 75 inches long and 39 to 41 inches wide, delivering power outputs ranging from 250 to 400 watts per panel.

Most residential solar panels measure between 65 to 75 inches long and 39 to 41 inches wide, delivering power outputs ranging from 250 to 400 watts per panel.

There are 3 standardized sizes of solar panels, namely: 60-cell solar panels size. The dimensions of 60-cell solar panels are as follows: 66 inches long, and 39 inches wide. That's basically a 66×39 solar panel. But what is the wattage?

That is unfortunately not listed at all. 72-cell solar panel.

Most residential solar panels measure between 65 to 75 inches long and 39 to 41 inches wide, delivering power outputs ranging from 250 to 400 watts per panel. Understanding these dimensions is crucial for homeowners planning their solar installation, as panel size directly impacts system.

Learn how to choose the ideal solar panel size for your home with charts, standard dimensions, and tips to calculate size per kW in this complete guide. Choosing the right solar panel size can feel like a puzzle, as it is a key part of how solar energy works. Roof shapes, power goals, and budget.

Typically, residential solar panels contain 60 cells and commercial panels have 72. Both types of solar panels have different dimensions and weights. Though they have the same width and depth, lengths vary. When considering residential solar panels, typical configurations consist of 60 cells.

There are three main sizes of solar panels to know: 60-cell, 72-cell, and 96-cell. For commercial and residential solar panels, the 60-cell and 72-cell solar panels size are most commonly used as the 96-cell measures 17.5 square feet – which can make for a challenging fit on your roof. The standard.

Understanding solar panel dimensions is crucial for planning your solar system

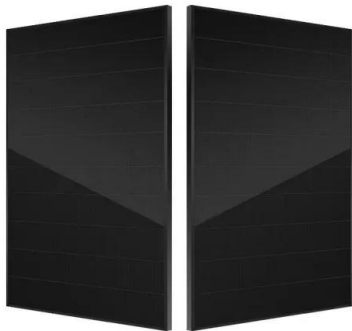


installation, maximizing efficiency, and ensuring compatibility with your available space. In this blog, we'll break down the standard sizes of solar panels, explain how panel dimensions impact performance, and help you.



## Residential solar panel size

---

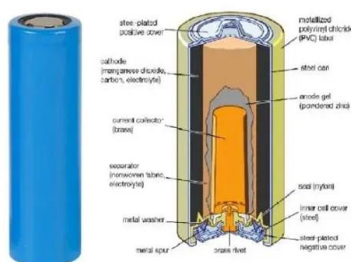


### How Big Are Solar Panels? Here's Their Typical Size and Weight

Here's a guide to understanding the size and weight of solar panels, and what that means for your energy system. How big are solar panels? Individual solar panels come in a lot of different ...

### [Guide to Solar Panel Sizes & Dimensions \(August 2025\)](#)

Solar panel size refers to the total amount of power a solar panel can generate over a period of time Solar panel dimensions refers to the physical size of a solar panel Solar panel sizes and wattage range from 250W ...



### [Solar Panel Size & Weight Guide \[+ Charts\] - Solartap](#)

Average Solar Panel Dimensions Standard residential solar panels measure 66 inches by 40 inches, or a little over 5 feet long and 3 feet wide. Each panel therefore takes up around 18 square feet. Commercial ...

### [Solar Panel Sizes: Choosing the Right Dimensions for ...](#)

Choosing the right solar panel size can make or break your system's performance. In this guide, we break down how to match your energy needs,



roof space, and budget with the ideal panel wattage, whether for a ...



### [Solar Panel Sizes & Dimensions \(UK\): Simply ...](#)

What we mean by solar panel sizes and why they matter. Standard solar panel sizes & dimensions for residential and commercial panels in the UK. Expert tips on selecting the best solar panel size based on your energy needs and roof. ...

### [Solar Panel Sizes and Wattage: A Comprehensive ...](#)

Understanding Solar Panels: What are They Solar panels come in various sizes depending on their wattage or power output. A common residential solar panel size is approximately 65 inches by 39 inches, and ...



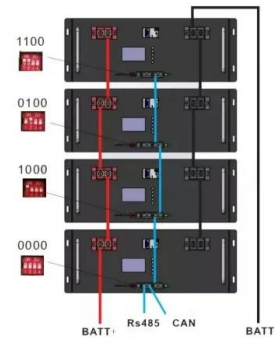
### [Solar Panel Size And Weight: A Comprehensive Guide](#)

There are three main sizes of solar panels to know: 60-cell, 72-cell, and 96-cell. For commercial and residential solar panels, the 60-cell and 72-cell solar panels size are most commonly used as the 96-cell measures 17.5 ...



## How Big are Solar Panels?

The size of the solar panel determines its specific use and the type of energy system it is best suited for: Small portable panels are better suited for small off-grid applications, such as powering the lights and air conditioner in your ...



## [Residential vs. Commercial Solar Panels: What's the ...](#)

When comparing different brands of solar panels, you will notice that some models are described as "residential", while others are described as "commercial". However, this is just a naming convention for different panel ...

## [What Solar System Size Will Your Home Insurance ...](#)

The average residential solar system in America ranges from 5 to 10 kilowatts (kW), perfectly sized to offset most household energy needs while considering your impact on homeowners insurance. This sweet spot balances ...



## [Solar Panel Size and Weight: How Big Are Solar Panels?](#)

Solar panels generate clean energy and significant savings, but they aren't a one-size-fits-all solution. The size and weight of solar panels vary depending on the make and model, with most residential panels measuring ...



## Contact Us

---

For catalog requests, pricing, or partnerships, please visit:  
<https://solar360.co.za>