

Roof solar panels dimensions





Overview

A typical residential solar panel measures about 65 inches by 39 inches (roughly 5.4 feet by 3.25 feet), though slight variations exist between manufacturers. These standard dimensions provide approximately 15 square feet of surface area per panel.

A typical residential solar panel measures about 65 inches by 39 inches (roughly 5.4 feet by 3.25 feet), though slight variations exist between manufacturers. These standard dimensions provide approximately 15 square feet of surface area per panel.

If you want to calculate how many solar panels you can put on your roof, you will obviously need to know the size of a solar panel. Example: 5kW solar system is comprised of 50 100-watt solar panels. Alright, your roof square footage is 1000 sq ft. Can you put a 5kW solar system on your roof?

For.

Learn how to choose the ideal solar panel size for your home with charts, standard dimensions, and tips to calculate size per kW in this complete guide. Choosing the right solar panel size can feel like a puzzle, as it is a key part of how solar energy works. Roof shapes, power goals, and budget.

Understanding solar panel dimensions is crucial for planning your solar system installation, maximizing efficiency, and ensuring compatibility with your available space. In this blog, we'll break down the standard sizes of solar panels, explain how panel dimensions impact performance, and help you.

The length and width of solar panels can vary widely, and size determines the number of panels that can fit on a roof and the system's overall energy output. At Solar Insure, choosing the right solar panel is critical in your journey toward clean and sustainable energy. To help you make the best.

Let's break down everything you need to know about solar panel sizes for every type of application. Solar panel "size" actually refers to two key measurements: These two factors work together to determine your system's



efficiency, cost, and performance. The trick is finding the right balance for.

There are three main sizes of solar panels to know: 60-cell, 72-cell, and 96-cell. For commercial and residential solar panels, the 60-cell and 72-cell solar panels size are most commonly used as the 96-cell measures 17.5 square feet – which can make for a challenging fit on your roof. The standard.



Roof solar panels dimensions



[Solar Panel Sizes & Dimensions \(SA\): Simply ...](#)

Solar panel dimensions & sizes (SA): Simply explained When it comes to investing in solar energy, choosing the right solar panel size is bottom-line. Indeed, it's not just about finding something that fits your roof. The size of your ...

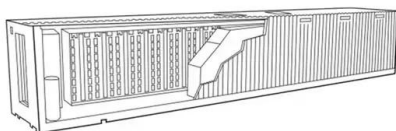
[Solar Panel Dimensions and Sizes: Complete Guide](#)

However, with different solar panels dimensions, compositions, and factors to weigh, it can be challenging to figure out how many solar panels are needed to maximize your ROI. This leads us to wonder, do you know how many solar ...



Solar Panel Sizes Explained: Choosing the Right Fit for Your ...

Discover the ideal solar panel size for your energy needs. This guide breaks down how panel size impacts efficiency, installation, and cost, helping you choose the right option for your home or ...



[Solar Panel Sizes: Choosing the Right Dimensions for ...](#)

Choosing the right solar panel size can make or break your system's performance. In this guide, we break down how to match your energy needs,

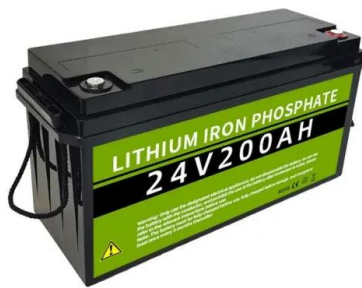


roof space, and budget with the ideal panel wattage, whether for a ...



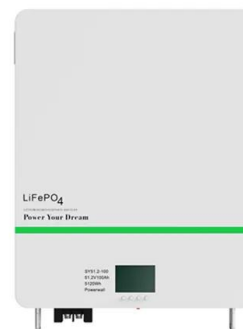
[Solar Panel Size Guide: Which Size Of Solar Panel Is...](#)

While there is some size variation in solar panels depending on the model and manufacturer, these standard panel sizes offer a good guideline when calculating how many panels you will be able to fit on your roof.



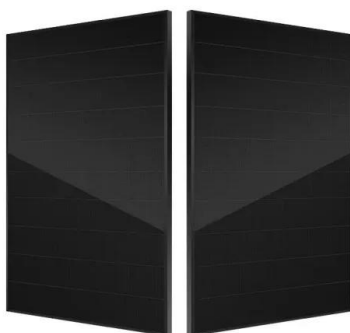
How Big are Solar Panels?

The size of a solar panel is an essential factor to consider when choosing the best possible setup for your roof. Consider your energy needs, space availability, and budget when to ensure you get the most efficient and cost-effective system.



[Perfect Solar Panel Sizes for Your Home \(Expert ...\)](#)

Today's residential solar panels come in remarkably consistent sizes, making it easier for homeowners to plan their solar installations. A typical residential solar panel measures about 65 inches by 39 inches (roughly 5.4 ...





[What's the Average Solar Panel Size and Weight?](#)

The best solar providers will help you pick the right panels that support your energy needs and work with your roof, but homeowners should understand how a panel's size and weight impact installation. Below, we ...



[We Analyzed 100 Solar Panels: Dimensions, ...](#)

The most common depth is 1.38 inches. Panel dimensions are influenced by wattage, cell technology, and panel design, which means sizes will always vary, even between panels with similar wattage or efficiency ratings. Understanding ...

[Solar Panels Dimensions & Drawings. Dimensions](#)

Solar panels, also known as photovoltaic (PV) cells, are devices that convert sunlight directly into electricity. Each panel is made up of many small cells that capture sunlight and, through a process called the ...



[How Big Is the Average Solar Panel? Dimensions](#)

If you're thinking about going solar for your home or business, you might be asking: How big is the average solar panel? Size plays a key role in fitting panels on your roof, meeting energy demands, and maximizing ...



[A Comprehensive Solar Panel Size Chart: Find the](#)

...

Imagine making a simple switch that powers your home better and helps the earth. Choosing solar energy is smart, but sizing it correctly is crucial. Ever thought about matching solar panel sizes to your home's energy ...



Contact Us

For catalog requests, pricing, or partnerships, please visit:
<https://solar360.co.za>