

Roofs are never designed for solar panels





Overview

Not every roof is ideal for solar panel installation - certain materials, angles, and structural factors can make installation difficult or even impossible. So, how do you determine your roof's solar suitability?

Factors like shading, available space, and roof type.

Not every roof is ideal for solar panel installation - certain materials, angles, and structural factors can make installation difficult or even impossible. So, how do you determine your roof's solar suitability?

Factors like shading, available space, and roof type.

Not every roof is ideal for solar panel installation - certain materials, angles, and structural factors can make installation difficult or even impossible. So, how do you determine your roof's solar suitability?

Factors like shading, available space, and roof type all impact solar panel.

Different roof types that may not be suitable for installing solar panels will be examined, and reasons given with possible ways to make them right. 1. Slate Roofs Materials: Slate roofing is made of thin, flat stones that can be brittle and heavy. Issues: The softness and weight of slate tiles.

If you are thinking of installing solar panels on your roof, you might be wondering which types of roofs are not compatible. In this blog post, we are going to explore the six types of roofs that solar panels cannot go on. We will cover shingle roofs, tile roofs, metal roofs, flat roofs, thatched.

Why are buildings not covered in solar panels?

I recently moved, and on a walk noticed one of the buildings nearby being covered in solar panels down the walls/sides. This made me realize I'd never seen this before. But why is this barely ever used?

It might not be as effective as covering a large.



When determining whether a roof is ideal for solar panels, there are few things that should be kept in mind. The roofing material being used, slope, orientation, and structural integrity all play a role. Roofs made from materials that cannot support the weight of solar panels, or those with steep.

Let's get this out of the way first: Almost no one has the perfect roof for solar. Although some roof shapes and angles are better for solar production than others, solar panels are extremely versatile and can provide energy cost savings and carbon footprint reduction in a wide range of. Do you have the perfect roof for solar?

Let's get this out of the way first: Almost no one has the perfect roof for solar. Although some roof shapes and angles are better for solar production than others, solar panels are extremely versatile and can provide energy cost savings and carbon footprint reduction in a wide range of configurations.

Can solar panels be installed on a roof?

"It's worth noting that solar panels can also be installed on other surfaces, such as ground mounts or on the sides of buildings, which can provide additional space for installation." Fred Lowe, director of electrical and mechanical contractors Lowe & Oliver, says the critical question to ask is if your roof is structurally sound.

What are the characteristics of a solar roof?

There are several roof characteristics that effect how much your solar panels will produce. Here is the top six: Also known as azimuth, orientation is the direction your roof faces. For North American solar systems, the best roof design for solar panels is one with a large, unshaded south face (an azimuth of 180 degrees).

What is a good roof for solar panels?

It may sound simple, but a large square roof with a standard pitch between 20-30 degrees is ideal for a simple solar system. Roofs with lots of tiers with little extended space can create challenges for designers and installers. What type of roof is not good for solar panels?

.

Can a roof be used as a solar power source?



“If there is not enough space on the roof to meet the desired power output goals then property owners can potentially use other locations including ground-mounted solar, as well as the sides of buildings, or shed and garage roofs,” Ben adds.

How many solar panels can be installed on a roof?

Along with orientation, the size of your roof will determine how many solar panels you can install. The average US home solar system size is 5 kilowatts or 12-13 panels with a rating of 400 Watts.



Roofs are never designed for solar panels

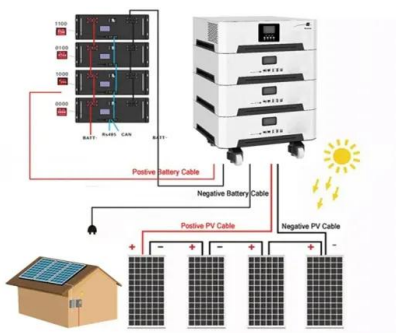


Integrated Solar Roof Tiles

Learn about integrated solar roof tiles, the innovative solution that combines solar energy and roofing materials. Discover how these tiles offer homeowners an aesthetically pleasing, efficient, and sustainable way to generate solar power in ...

[Is Your Roof Ready for Solar Panels? A ...](#)

Getting Started with Solar With energy prices climbing and climate change a pressing concern, there's never been a better time to consider solar energy. More Australian homeowners are turning to solar power as a ...



[Your Roof Is Not Good For Solar Panels](#)

The Roof Type Makes It Inadvisable Certain roofs like glazed tile, metal tile, stone coat metal, slate, copper, and other specialty roof types are not conducive to solar panel installation, or it can be very expensive. There are ...

[Rooftop Solar PV Systems: Definition, and Different ...](#)

A rooftop solar photovoltaic (PV) system uses solar panels mounted on the roof of a building to convert sunlight into electricity. Rooftop solar



systems rely on the photovoltaic effect, where cells generate electricity in ...



[Rooftop Solar Installation: Step-by-Step Guide](#)

What is a Rooftop Solar System? A rooftop solar system consists of solar photovoltaic (PV) panels mounted on the roof of a building. These panels absorb sunlight and convert it into electricity, reducing or even ...

[Why your roof might not be suitable for solar panels](#)

A south-facing roof is an ideal scenario, since this direction receives the most direct sunlight during the day, however, east and west-facing roofs can still generate a significant amount of energy so solar can still be well ...



[A Pro Guide to Installing Solar Panels](#)

Installing solar panels on existing homes begins with choosing the placement on the roof or other part of the property. Some Pros determine the suitability of a house for solar panels using "the three S" method, for "shade," ...



Contact Us

For catalog requests, pricing, or partnerships, please visit:
<https://solar360.co.za>