

# Solar module mounting structure





## Overview

---

A mounting structure is the skeleton of your solar system. It securely holds the solar panels on various terrains such as on the top of a roof, parking lot, or water body. A properly installed mounting structure ensures the efficiency of a solar system. Explore the mounting structure for solar.

A mounting structure is the skeleton of your solar system. It securely holds the solar panels on various terrains such as on the top of a roof, parking lot, or water body. A properly installed mounting structure ensures the efficiency of a solar system. Explore the mounting structure for solar.

Solar Mounting Structures are critical components that ensure the efficiency of a solar power system in both utility and solar rooftop applications. These frameworks allow panels to rest comfortably at the right angle, which helps in maximizing energy generation. Solar projects in India use a.

Solar panel mounting solutions ensure that solar panels receive the minimal amount of solar radiation required for the best solar energy. A suitable solar mounting structure can withstand not only the weight of the modules but also extreme weather conditions such as floods and storms. In this.

If you want your solar panels to work reliably for years, understanding the different types of mounting structures is the first step. Somaya Solar helps you choose smart, so you never regret your decision. What Is a Solar Panel Structure?

A solar panel structure is the frame that holds and supports.

This guide provides an in-depth exploration of solar module mounting structures, detailing their types, applications, advantages, and considerations for optimal performance. Rooftop mounts are among the most common types of solar mounting structures. These systems are installed directly on the.

Selecting the correct mounting structure for your solar panels is crucial. This choice greatly influences the system's efficiency by determining the panels' orientation and angle towards the sun, optimizing sunlight capture and



conversion into electricity. Furthermore, a well-chosen and installed.

Solar panel mounting structures are essential components that secure photovoltaic (PV) panels in place, ensuring optimal performance and longevity. Selecting the appropriate mounting system depends on installation location, environmental conditions, and specific energy needs. Below is an overview.



## Solar module mounting structure

---



### Module Mounting Structure

The structure is flexible and can be immense load. We offer complete turnkey solution for solar mounting structure that includes designing, production, fabrication, project management and installation. Offered in a multitude of ...

### [Types Of Solar Panel Mounting Structure And ...](#)

The market of solar panel system is increasing day by day. The businesses get exquisite competition in the solar field and several bidders are thinking twice about the quality of the solar panel mounting ...



### [A guide to solar panel mounting racks](#)

Speaking about solar PV systems most people usually refer at first to solar panels, secondly to inverters and batteries, thirdly to charge controllers. But what about the structures you need to mount your system on a roof or a ...

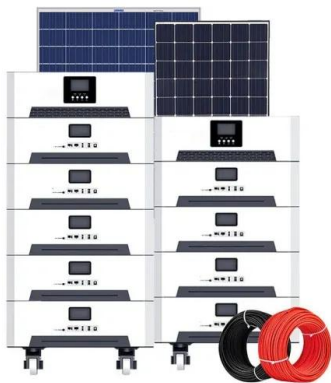
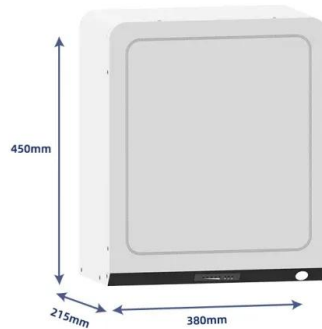


### [7 Types of Solar structures for your roof](#)

This type of mounting is used when a solar panel is installed on a tilted roof. The tilt at which the solar panels will be placed will be similar to the tilt angle of the roof with a minimum clearance of



0.1m. Depending on the rooftop ...

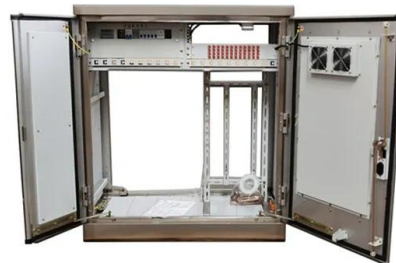


### 5 Different Types of Solar Mounting Structure

3 ???· Discover the main types of solar panel mounting structures -- ground, rooftop, carport, aluminium, GI, and bifacial designs. Learn why the right solar structure matters and how ...

### Top 5 Leading Solar Mounting Structure Firms In ...

Solar Mounting Structures are the metal frameworks that hold solar panels in place and are also the critical components of a solar power system Solar panels work best when they are exposed to sunlight ...



### Different Types of Solar Mounting Structures

Solar panel mounting refers to the methods used to secure solar PV modules in place. There is a unique mounting system available if you need a solution for a pitched roof, flat roof, or ground. There are ...



### [Top 4 Solar Module Mounting Structures: Pros and ...](#)

Solar module mounting structures are increasingly important for the performance, safety, and longevity of solar power systems. The reason is that the mounting structure supports the panels and allows ...



## Contact Us

---

For catalog requests, pricing, or partnerships, please visit:  
<https://solar360.co.za>