

Solar panel cell size





Overview

Panels typically contain 60, 72, or 96 individual solar cells. Source: Solar Earth Inc. A high-transparency tempered glass layer shields the cells from the elements (hail, dust, and wind) while enabling sunlight to pass through efficiently. This protective coating (often EVA plastic) surrounds the.

Panels typically contain 60, 72, or 96 individual solar cells. Source: Solar Earth Inc. A high-transparency tempered glass layer shields the cells from the elements (hail, dust, and wind) while enabling sunlight to pass through efficiently. This protective coating (often EVA plastic) surrounds the.

There are 3 standardized sizes of solar panels, namely: 60-cell solar panels size. The dimensions of 60-cell solar panels are as follows: 66 inches long, and 39 inches wide. That's basically a 66×39 solar panel. But what is the wattage?

That is unfortunately not listed at all. 72-cell solar panel.

There are three main sizes of solar panels to know: 60-cell, 72-cell, and 96-cell. For commercial and residential solar panels, the 60-cell and 72-cell solar panels size are most commonly used as the 96-cell measures 17.5 square feet – which can make for a challenging fit on your roof. The standard.

Most home solar panels are about 5.5 feet x 3 feet and weigh roughly 40 pounds each. Most of the time, you won't see the size of solar panels expressed in feet. Instead, you'll see it's listed as the number of solar cells within a panel, with the most common solar panel sizes being 60-cell and.

In this article, we will introduce you to various solar panel sizes to help you choose the right size of solar panel. 1. Solar cell size The main solar cell sheet sizes available in the market today are 125mm x 125mm, 156mm x 156mm, 158.75mm (G1), 166mm (M6), 182mm (M10), 210mm (G12). Among them.

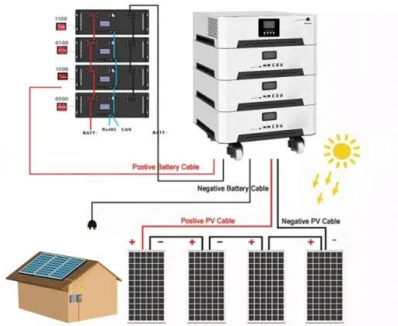
Solar cell size can vary depending on the type of cell and its intended application. Standard solar panels for residential use typically have 60 cells, each measuring about 156 mm square. However, for commercial or utility scale, panels could have up to 72 cells with the same dimensions or bigger.



The average size of a typical residential solar system in the US is 6-8 kW, meaning that a typical home rooftop array for the home will optimally have 15 - 20 solar panels installed because, for example, Qcells offers residential solar panels with a power (Wp = Watt peak) output of between 370Wp ~.



Solar panel cell size



[From M0 to M12 - different wafer sizes in the market](#)

At that time, our Taiwanese cell manufacturer went straight from M2 to the M4 with a size of 161.7 mm in order to only make necessary investment purchases once, together with the multi busbar variant. At the end ...

[Guide to Solar Panel Sizes & Dimensions \(August 2025\)](#)

Solar cell dimensions are typically around 189 x 100 x 3.99cm (6.2 x 3.28 x 0.13 feet), while solar panel dimensions are usually between 1.6m² to 2m² (17.22 to 21.53 square feet). The physical size of the solar panel is ...



[Solar Panel Size & Weight: The Ultimate Guide 2024](#)

The size of a solar panel is often described by the number of cells it has, such as 60-cell panels, arranged in a 6 by 10 grid, commonly used for home installations with output ratings between 350 and 400 watts.

[What is Solar Panel Size and Why Does it Matter?](#)

The most common solar cell size is 152-by-152mm (6-by-6 inches), but in the past few years new technologies have led to larger cell sizes, which means higher power but also,



potentially, larger solar panel sizes.



[Complete guide to solar panel size and weigh](#)

The solar panels made up of these solar cells are 60 cell solar panels, 72 cell solar panels, and 96 cell solar panels. The 60 cell solar panels are usually arranged in a 6*10 arrangement, the size of these solar panels is ...

[Complete guide to solar panel size and weigh](#)

Solar cells are assembled in parallel or in series on a backsheet, and then the solar panel is composed of the upper and lower shells and the sealing layer in the middle, so it can be said that it is the size of the solar cells ...



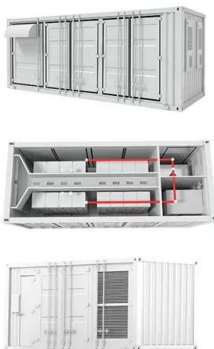
[Solar Silicon Wafer Size M0 M2 G1 M6 M10 G12 and ...](#)

What do "M" and "G" stand for in solar wafer size? It begins with the letter "G", which means that the solar silicon wafer is full square Beginning with the letter "M", it means that the solar silicon wafer is Pseudo-square and ...



[Solar Panel Dimensions and Sizes: Complete Guide](#)

There are three main sizes of solar panels to know: 60-cell, 72-cell, and 96-cell. For commercial and residential solar panels, the 60-cell and 72-cell solar panels size are most commonly used as the 96-cell measures 17.5 ...



[Solar Panel Size Guide: How Big Is A Solar Panel?](#)

There are other panel size configurations on the market, but they are much less common.. However, the standard 60-cell and 72-cell panel sizes are by far the most common in the industry. Solar Panel Size Chart How Big ...

[Solar Panel Dimensions and Weight: A Complete ...](#)

Most homes use 60-cell panels measuring 65-by-39 inches. Larger panels, like 72- or 96-cell grids, can boost efficiency. Half-cell panels fit twice the number of cells into a standard-size panel. Depending on your ...



Wafer Sizes - PV-Manufacturing

Putting this into perspective, a solar cell architecture of 19.95% efficiency using the M2 wafer format will show a 0.1 W power gain compared to M0. Therefore, larger ingot sizes allow for monocrystalline wafers to be less "pseudo" square, ...



Contact Us

For catalog requests, pricing, or partnerships, please visit:
<https://solar360.co.za>