

Solar panel connection to battery





Overview

How do you connect a solar panel to a battery?

Connect the solar panel's output to the charge controller's input terminals. Connect the Charge Controller to the Battery Next, connect the output terminals of the charge controller to the battery. Make sure to connect the positive terminal of the charge controller to the positive terminal of the battery and the negative to negative.

Can a solar panel connect to a battery?

With careful attention to safety and proper maintenance, your solar panel to battery system will provide reliable, clean energy for decades to come. What happens if I connect solar panels to the charge controller before connecting the battery?

How do I know what wire size to use for my solar panel to battery connections?

.

Why should you connect batteries to charge controllers before solar panels?

Connection sequence is critical for equipment safety – Always connect batteries to charge controllers before solar panels. This prevents controller damage and ensures proper system voltage detection, as charge controllers use battery voltage as their reference point.

Can I connect multiple solar panels to one battery system?

A: Yes, you can connect multiple solar panels to one battery system, but make sure to use a compatible charge controller to handle the additional power. Q: How long does it take to charge a battery with solar panels?

A: The charging time depends on the battery capacity, solar panel output, and sunlight availability.



Can a solar panel charge a 12 volt battery?

These instructions will show you, with step-by-step videos, one of the foundational skills of building DIY solar power systems: how to connect a solar panel to a battery. By the end, you'll be charging your 12 volt battery — or higher — with free solar energy. (If that doesn't get your blood pumping. I don't know what will.) Alright.

How to connect solar panels to charge controller?

Using the wire cutters, cut enough wire to connect your solar panels to the charge controller. Also, cut a wire to connect the charge controller to the battery. First, connect the battery to the charge controller before the solar panels. This is crucial as connecting in the wrong order can damage your equipment.



Solar panel connection to battery



[How to Connect Solar Panel to Car Battery](#)

Connecting a solar panel to a car battery is a practical and efficient way to maintain your car's battery charge, especially for off-grid situations. Whether you're using a solar panel for camping, road trips, or ...

[How to Attach a Solar Panel to a Battery: Step-by-Step](#)

Discover how to seamlessly attach a solar panel to a battery with our comprehensive step-by-step guide. This article explores essential tools, installation tips, and common pitfalls to avoid, ensuring you harness solar ...



[Connecting a Solar Panel to a Battery](#)

The solar panel setup is in two types, first one is an Off-grid setup and the other one is an on-grid solar setup. Here I am explaining the off-grid solar connections. The off-grid solar setup means the solar and inverter ...



How to Connect Solar Panel to 12 Volt Battery: A Step ...

Discover how to efficiently connect a solar panel to a 12-volt battery in our comprehensive guide. This article explains the benefits of using solar



energy for off-grid living and provides detailed instructions on essential ...



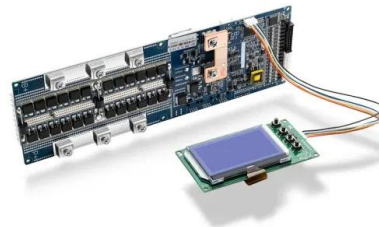
[How to Wire Solar Panels: A Step-by-Step Guide](#)

Connect Solar Panels to the Battery Bank: How to connect solar panel to battery? Attach the cables from the charge controller to the positive and negative terminals of the battery bank to hook up solar panels to batteries.



How to Connect Multiple Batteries for Solar: A Step-by ...

Discover how to efficiently connect multiple batteries for your solar power system in this comprehensive guide. Learn the benefits of different battery types, including lead-acid and lithium-ion, and understand the optimal ...



[How To Connect Solar Panels to a 12 Volt Battery](#)

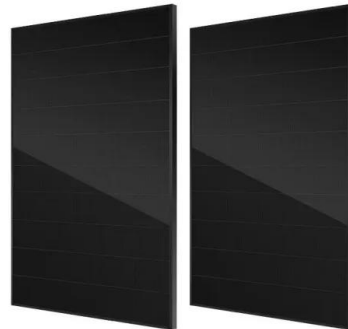
You can easily connect solar panels in parallel wiring to increase the electricity output voltage of a 12-volt battery. All you need is the battery, an appropriate charge controller, cables, and solar panels to harness ...





[Connect Solar Panels To An Inverter: A Step-by-Step...](#)

However, to truly harness the potential of solar energy, connecting the solar panels to an inverter is essential. The inverter serves as the heart of the solar power system, converting the direct current (DC) electricity produced by the ...



[Can I Connect Solar Panel Directly To Battery?](#)

Can I Connect a Solar Panel Directly to Battery?
Yes, you may connect a solar panel directly to a battery. Solar panels are frequently connected in this manner, and it is a very efficient way to charge batteries. There are ...

How to connect solar panels to inverter and battery in ...

This guide explains how to connect solar panels to an inverter safely and effectively. We'll also discuss factors like inverter capacity to help you determine how many solar panels you can connect to your inverter, ensuring ...



Contact Us

For catalog requests, pricing, or partnerships, please visit:
<https://solar360.co.za>