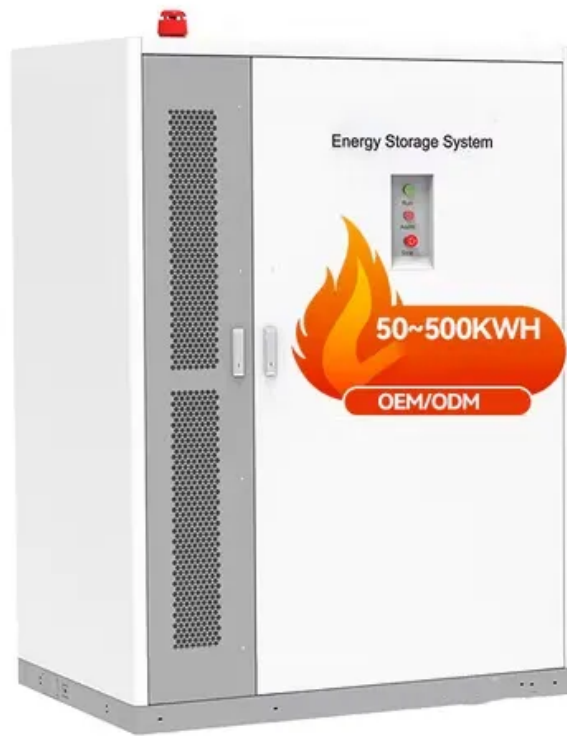


Solar panel power per m2





Overview

Solar energy generation per square meter can vary significantly, but typical values indicate that 1 square meter of solar panels can produce between 150 to 400 watts of electricity under optimal conditions. 2. Factors influencing energy generation include location, sun exposure, and.

Solar energy generation per square meter can vary significantly, but typical values indicate that 1 square meter of solar panels can produce between 150 to 400 watts of electricity under optimal conditions. 2. Factors influencing energy generation include location, sun exposure, and.

The sunlight received per square meter is termed solar irradiance. As per the recent measurements done by NASA, the average intensity of solar energy that reaches the top atmosphere is about 1,360 watts per square meter. You can calculate the solar power per square meter with the following.

Solar panels have become a cornerstone of renewable energy, but many wonder: How much power can a single square meter of solar panels actually produce?

Let's break down the science behind photovoltaic efficiency. Under optimal conditions (5 peak sun hours): At noon under direct sunlight: *Note: 1m^2 .

On a clear day, each square metre of the Earth's surface receives approximately 1,000 watts of solar energy, also known as 1 kW/m^2 . This energy can be converted into electricity using solar panels, making it a reliable and sustainable source of power for homes and businesses. However, not all of.

This metric shows how much power a solar panel produces per square meter of surface area under standard conditions. By knowing W/m^2 , you can: Install solar panels and maximize your energy output! What is Solar Panel Efficiency?

Solar panel efficiency measures how well a panel converts sunlight into.

The average power output of a solar panel is approximately 150 to 400 watts



per square meter, depending on various factors including the technology used and the angle of sunlight. 2. Most commonly, solar panels can convert about 15% to 22% of solar energy into electricity, which means that the.

Solar energy generation per square meter can vary significantly, but typical values indicate that 1 square meter of solar panels can produce between 150 to 400 watts of electricity under optimal conditions. 2. Factors influencing energy generation include location, sun exposure, and panel. What is solar panel watts per square meter (W/M)?

Solar panel watts per square meter (W/m) measures the power output of a solar panel based on its size. Compare solar panels to see which generates most electricity per square meter. A higher W/m value means a solar panel produces more power from a given area. This can help you determine how many solar panels you need for your energy needs.

How much energy does a solar panel produce per square meter?

Given Egypt's high solar irradiance levels, which can reach up to 2200 kWh/m² annually, the potential power output per square meter of a solar panel can be quite significant. For a solar panel with an efficiency of 18%, this translates to an annual energy production of about 396 kWh/m².

What is solar panel efficiency?

Solar panel efficiency is crucial for a solar power system's success. High-efficiency panels convert more sunlight into electricity, boosting overall output. To measure this efficiency, use solar panel Watts per square meter (W/m). This metric shows how much power a solar panel produces per square meter of surface area under standard conditions.

How to calculate solar power per square meter?

You can calculate the solar power per square meter with the following calculators. 1. For Off-Grid It is the system that generates its own power with panels and a battery bank. In the off-grid calculator select from the option, shed cabin, house, or portable. Next, select the days of full autonomy, etc. 2. Solar Savings Calculator.

How do you measure solar panel efficiency?

To measure this efficiency, use solar panel Watts per square meter (W/m). This metric shows how much power a solar panel produces per square meter



of surface area under standard conditions. By knowing W/m, you can: Install solar panels and maximize your energy output! What is Solar Panel Efficiency?

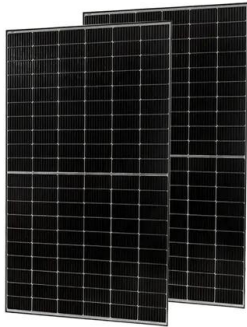
.

How many watts can a solar panel generate?

This means that for every square meter of this solar panel, you can generate 180 watts of power under optimal conditions. Panel Orientation and Tilt: The angle at which the panel is installed can significantly affect its efficiency. Solar panels should be oriented to face the sun as directly as possible throughout the day.



Solar panel power per m2



[Watts Per Square Meter Solar Panel - The Go-to Guide](#)

Watts per square meter (W/m^2) is the power density of sunlight falling on a given area of solar panels. In the context of solar panels, it refers to the amount of electrical power a solar panel can generate per unit of surface ...

[How many WP per square meter of solar panels](#)

A robust understanding of wattage output per square meter in solar panels reveals key considerations for both potential investors and end-users. Knowing that modern technology has advanced solar panel efficiency ...



[How much does solar energy generate per square ...](#)

Solar energy generation per square meter can vary significantly, but typical values indicate that 1 square meter of solar panels can produce between 150 to 400 watts of electricity under optimal conditions.



[Solar Panel Output per Square Meter: Efficiency](#)

Solar panels have become a cornerstone of renewable energy, but many wonder: How much power can a single square meter of solar panels



actually produce? Let's break down the science behind photovoltaic efficiency.



Photovoltaics

Photovoltaics - Calculate Power and Surface Area Calculator for the power per area or area per power of a photovoltaic system and of solar modules. You can enter the size of the modules and click from top to bottom, or omit some steps ...



Solar Panel Efficiency: Watts Per Square Meter Explained

Premium panels on the market today boast efficiencies upward of 22%, pushing the envelope to around 220 watts per square meter. This leap in efficiency isn't just a technical triumph; it's a ...



How many square meters of space is required per kw ...

The area required for each kilowatt (kW) solar panel system is approximately 5 to 10 square meters, depending on the panel efficiency and wattage. 1. The efficiency of the solar panels influences the space needed ...





[How Many kWh Does a Solar Panel Produce?](#)

A solar panel generates energy depending on the irradiance of its location, which is generally measured in kilowatt-hour per square meter per day (kWh/m²/day). This location is known as peak sun hours and hence can be ...



[How Much Do Solar Panels Weigh? A Complete ...](#)

In general, a 60 cell residential solar panel weighs between 35lbs and 50 lbs (16-22 kg) and can produce between 300 and 400 watts of power. However, a 36 cell flexible (thin-film) solar panel which can produce ...



[How much energy do solar panels produce for your ...](#)

More people are beginning to see the numerous benefits solar panels can bring, both environmentally and financially. Learn exactly how much electricity solar panels could generate for your household.



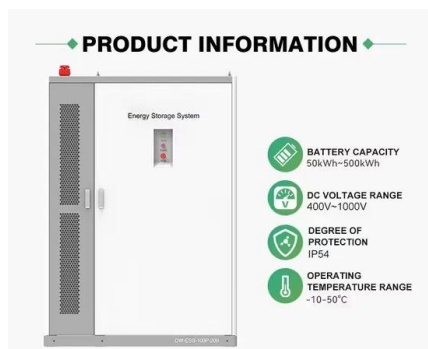
How Much Do Solar Panels Weigh?

The Weight of Solar Panels per M² Different manufacturers create solar panels of different weights. On average, solar panels weigh between 10 and 20 pounds per square meter. For a sound roof, this weight won't threaten the roof's stability ...



How much does solar energy generate per square ...

1. Solar energy generation per square meter can vary significantly, but typical values indicate that 1 square meter of solar panels can produce between 150 to 400 watts of electricity under optimal conditions. 2. ...

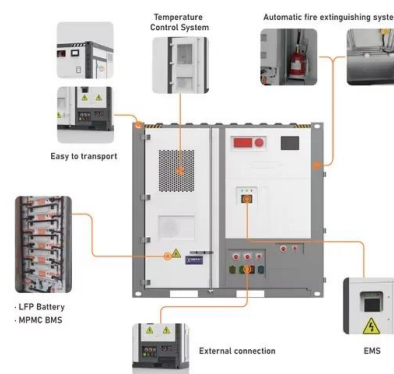


How to Calculate the Surface Area Required by Solar ...

Lets assume that you want to install 10 solar panels rated at 100 Watts each and having a conversion efficiency of 18%. The total power output of the solar system can be calculated as:
Total Power Output = Total Area x ...

Solar Panels Watts per Square Meter

Solar panels are at the forefront of innovation and sustainability when it comes to renewable energy sources. Harnessing the power of the sun to generate electricity is an eco-friendly solution with significant potential for ...





Contact Us

For catalog requests, pricing, or partnerships, please visit:
<https://solar360.co.za>