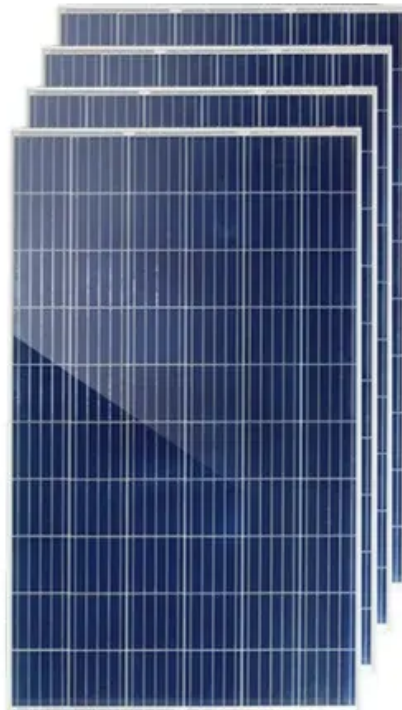
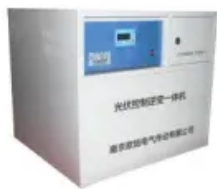


# Solar panel to battery controller





## Overview

---

This article from ShopSolar.com provides a guide on how to connect solar panels to a battery bank, charge controller, and inverter in a DIY solar panel system. It emphasizes the importance of proper preparation, using the right components, and ensuring safety.

This article from ShopSolar.com provides a guide on how to connect solar panels to a battery bank, charge controller, and inverter in a DIY solar panel system. It emphasizes the importance of proper preparation, using the right components, and ensuring safety.

Connection sequence is critical for equipment safety – Always connect batteries to charge controllers before solar panels. This prevents controller damage and ensures proper system voltage detection, as charge controllers use battery voltage as their reference point. Lithium batteries offer.

A charge controller acts as a safety barrier between panels and a battery and should be a part of every home solar panel installation. In this article, we'll explain how to wire together solar panels, a regulator and a battery. But what does a battery fear?

From what does a controller actually.

If your solar energy system includes a battery, a charge controller is an essential component you shouldn't overlook. It plays a crucial role in protecting your battery, extending its lifespan, and ensuring your system operates safely and efficiently. In this guide, we'll walk you through the.

This article from ShopSolar.com provides a guide on how to connect solar panels to a battery bank, charge controller, and inverter in a DIY solar panel system. It emphasizes the importance of proper preparation, using the right components, and ensuring safety throughout the installation process.

In this article, I will explain how to connect a solar panel to a battery step-by-step. I will also share a few tips you need to know along the way. Here is a diagram connecting a single 100W solar panel to a 12V 100Ah lithium battery



and a 500W inverter: In the first step, you will wire the.

Whether you're using a simple PWM solar controller or a more advanced MPPT solar charge controller, understanding how this component works is key to building a safe and reliable off-grid setup. In this guide, we'll walk you through the basics, setup steps, and real-world applications of a solar.



## Solar panel to battery controller

---



### [MPPT charge controllers: A complete but quick overview](#)

What are MPPT charge controllers and what do they do? MPPT charge controllers - also called Maximum Power Point Trackers - are efficient DC-DC converters used in solar systems to connect solar panels to batteries ...

### [How to Wire Solar Panel to 12V Battery and DC Load?](#)

We will directly connect them to the charge controller, battery and DC loads. The following solar panel wiring diagram shows that a 12V, 120W PV panel is connected to the solar charge controller (Panel Negative terminal ...



### **How to connect solar panels to charge controller in 3 ...**

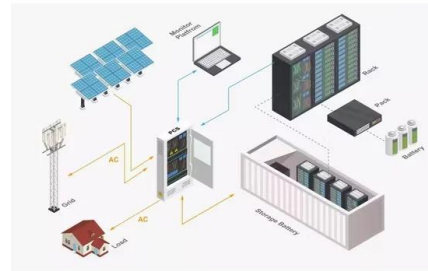
To choose the right one for your solar setup, divide the total power of your solar panels by your battery's voltage. For example, if you want to connect two 300-watt solar panels to a 12-volt battery, you need a charge ...

### [How to Wire a Solar Charge Controller: Step-by-Step ...](#)

Introduction to Solar Charge Controller Wiring To wire a solar charge controller, firstly, connect the battery to the controller, ensuring the positive



and negative terminals are correctly matched.  
Next, connect the solar ...



### [How to Connect Two Solar Panels to one Battery](#)

When you connect your solar panels directly to your battery, you will damage the battery (lead-acid or lithium). You need a device that measures the state of charge of your battery and charges it accordingly, just ...



### [Solar Charge Controller: Definition, Importance, and ...](#)

Solar charge controllers, solar panel controllers, or solar controllers, are an invaluable piece of equipment that regulates the flow of power from solar panels to the battery in a photovoltaic (PV) system. Solar panel ...



48V 100Ah



### [The Definitive Guide to Solar Charge Controllers: ...](#)

This definitive guide to solar charge controllers also-known-as solar battery maintainers or solar charge regulators is going to reveal: - why solar panel battery maintainers are essential for any battery-based solar power system - ...



### [What Is a Solar Charge Controller, and Do You Need It?](#)

A solar charge controller is a device that regulates the energy that travels from the solar panels into the battery. Solar generators convert and store power in a battery, with the electrical capacity recharged by the solar panels.



### **Solar Charge Controller Basics**

A charge controller, or charge regulator, is basically a voltage and/or current regulator to keep batteries from overcharging. It regulates the voltage and current coming from the solar panels going to the battery. Most "12 volt" panels put out ...

### [Can You Charge Solar Batteries without Charge ...](#)

Solar battery charging systems rely on photovoltaic solar panels to collect energy from the sun and charge lead-acid or lithium batteries for off-grid power storage. A charge controller is a crucial component that regulates the voltage and current ...



### **How to Wire a Solar Charge Controller: Step-by-Step Installation ...**

Introduction to Solar Charge Controller Wiring To wire a solar charge controller, firstly, connect the battery to the controller, ensuring the positive and negative terminals are ...



### MPPT Solar Charge Controllers Explained

Solar Charge Controllers are one of the most affordable and effective devices used to charge battery systems using solar. We explain how a MPPT charge controller works and how to select the right size solar charge ...



## Contact Us

---

For catalog requests, pricing, or partnerships, please visit:  
<https://solar360.co.za>