

# **Solar panel weight per square meter**





## Overview

---

The average weight of solar panels ranges from 10 to 20 kilograms per square meter. Monocrystalline panels, which offer higher efficiency, generally tend to weigh more than polycrystalline panels due to their material composition and construction.

The average weight of solar panels ranges from 10 to 20 kilograms per square meter. Monocrystalline panels, which offer higher efficiency, generally tend to weigh more than polycrystalline panels due to their material composition and construction.

On average, a solar panel can provide 15 watts per square foot. Let's start by breaking down the average dimensions of different solar panels by size. How Big Is a 100-Watt Solar Panel?

A 100-watt solar panel measures 47 inches long by 21.3 inches wide by 1.4 inches deep. A 100-watt solar panel is.

A typical residential solar panel is around 5.4 feet long and 3.25 feet wide (1.6mx1m), which gives it a surface area of approximately 17.55 square feet (1.68 sq.m.). This means that the weight per square foot of a typical solar panel is around 2.3 pounds (10.80 kg/sq.m.). The smaller size of.

On average, solar panels weigh between 10 and 20 pounds per square meter. For a sound roof, this weight won't threaten the roof's stability under the panels. The weight doesn't spread evenly across the surface of your solar panel. The fixtures where the panels are mounted bear the bulk of the.

Solar panels typically weigh between 10 to 20 kilograms per square meter, 2. The weight is influenced by the materials used, 3. The density of solar energy is calculated in watts per square meter rather than weight. The latter point is crucial as it refers to the energy output, which can be.

These panels cover an area of 17.62 square feet and weigh around 40 pounds, excluding the weight of frames and mounting equipment. On the other hand, commercial solar panels typically feature 72 cells, with dimensions of



approximately 3.25 feet by 6.5 feet. These panels cover an area of 21.13.

Solar panels typically weigh between 40 to 50 pounds per square meter, with variations based on the type and manufacturer. These weights are essential considerations when planning solar installations on rooftops or other structures, as they determine the structural requirements and installation. How much do commercial solar panels weigh?

This means that the weight per square foot of a typical solar panel is around 2.3 pounds (10.80 kg/sq.m.). The smaller size of residential solar panels makes them ideal for residential rooftop installations. Read our article to learn more about how many solar panels are needed to power a house.

How much do solar panels weigh on a roof?

It is also important to consider the weight of installing solar panels on your rooftop. On average, mounting equipment and solar panels weigh two to four pounds per square foot. "In terms of weight, it has little impact on your roof, as it's built to support much heavier infrastructure.

How much do solar panels & mounting equipment weigh?

The typical solar panels and mounting equipment weight is between 10 and 20 kilograms per square meter. This is well within the tolerances of most roofs, meaning there is no need to worry about the extra weight causing any damage. The weight of the panels is often used as an advantage, as it helps to hold the panels in place during high winds.

How big is a 1 KW solar panel?

The size of a 1 kW solar panel can vary depending on its efficiency and technology. On average, a standard residential solar panel that produces 1 kW of power typically measures around 15-20 square feet (1.4-1.9 square meters) How much do solar panels weigh in KG?

.

How much does a 60 cell solar panel weigh?

Every brand of solar panels has slight variations in their dimensions and weights, according to manufacturing material. Although the weight of different brands of solar panels varies, an average 60 cell solar panel weighs about 40 pounds. Other important factors are wattage and voltage/current



requirements.

How much does a 5kw solar system weigh?

Since residential panels weigh – on average – 40 lbs each, 5kW of solar panels weighs around 700 lbs. Including the weight of the mounting equipment, the overall weight that the system would add to the roof is 750 to 800 pounds.



## Solar panel weight per square meter

---

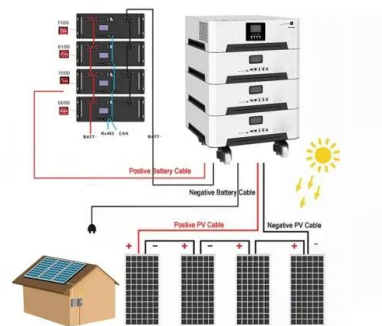


### How Much Does a Solar Panel Weigh?

In general, with their vast experience in setting up solar PV systems, they can give you a tip regarding solar panel weight per square meter and the cost. Moreover, they will help you determine solar panel weight per ...

### [Weight of solar photovoltaic panels per square meter](#)

To understand the impact of solar panel weight on a roof, it's best to consider the structural capacity of the roof, especially its load-bearing capabilities. Typically, a solar panel weighs ...



### [How Big Are Solar Panels? Understanding Solar ...](#)

The weight of solar panels can vary not only by cell size but also by the materials used, panel type, and manufacturer. However, here are approximate weight ranges for common solar panel categories based on cell ...

### [How Much Do Solar Panels Weigh? 2025 Accurate ...](#)

The typical solar panels and mounting equipment weight is between 10 and 20 kilograms per square meter. This is well within the tolerances



of most roofs, meaning there is no need to worry about the extra weight ...



### [Solar Panel Sizes, Dimensions & Weight , Solar Choice](#)

Solar Panel Sizes - How big are solar panels? This is a question many homeowners ask when they are considering installing a solar system. The answer isn't entirely straightforward. There are two factors to consider: The ...



### [How much does solar energy weigh per square meter?](#)

The average weight of solar panels ranges from 10 to 20 kilograms per square meter. Monocrystalline panels, which offer higher efficiency, generally tend to weigh more than polycrystalline panels due to their material ...



### **How much does a photovoltaic panel weigh per square meter**

RV solar panels are generally rated at 100-150 watts and are smaller and lighter than residential solar panels. In general, the average rigid solar panel used in RV solar systems is rated at 100 ...





### [Solar Power per Square Meter Calculator](#)

The amount of sunlight received per square meter on the solar panels determines the output you will receive from the solar panel system. So, if you are planning to get a solar panel system for your house, it is better to ...



### [How Much Does a Solar Panel Weigh? Solar Panel](#)

Assuming each panel weighs about 18 Kg. for a 6 kW solar installation of 20 solar panels, the panels will weigh about 362 Kg. If we divide this weight by the total area of the system (32.7 square meters) it gives a weight of ...

## Contact Us

---

For catalog requests, pricing, or partnerships, please visit:  
<https://solar360.co.za>