

Typical solar panel size uk





Overview

For residential UK homes, the average solar panel size is generally between 1.6 to 1.8 metres tall and around 1 metre wide. These panels typically produce between 250 to 450 watts, with a common 350-watt panel measuring 1.7 metres by 1 metre, covering 1.7 square metres on a roof. However, some.

For residential UK homes, the average solar panel size is generally between 1.6 to 1.8 metres tall and around 1 metre wide. These panels typically produce between 250 to 450 watts, with a common 350-watt panel measuring 1.7 metres by 1 metre, covering 1.7 square metres on a roof. However, some.

Solar panel sizes and wattage range from 250W to 450W, taking up 1.6 to 2 square metres per panel. One of the most important things to consider when getting solar panels for your home is the specific solar panel size and dimensions. While there's a lot of technical information out there on solar.

Residential solar panels in the UK typically measure around 1.7 to 2 square metres and deliver 350 to 450 watts of power, but they're not all created equal. Some are ultra-efficient and compact; others are larger but deliver less per square metre. If you're tight on roof space or looking for the.

The residential panel sizes range between 250 watts and 450 watts. You can simply multiply the panel's amperage by its voltage to calculate its size. Dimensions: They tell how long, wide, and thick a solar panel is. Each panel is made up of several cells. The dimensions of each cell are usually.

Nevertheless, the typical size of a residential solar panel in the UK is 250W to 450W. It's important to note that when considering solar panels for your home or business, it's recommended to focus primarily on the wattage or power output rather than the physical dimensions. This is because the.

Domestic solar panels come with an average power output of 250-400 watts. In terms of dimensions, domestic solar panels average 1.7 metres long, and 1 metre wide and have a thickness of 3cm to 5cm. Domestic solar panels can weigh between 18kg - 20kg on average. Considering wattage, weight and.



There are two ways to talk about solar panel size: watts (W) and physical dimensions, though the more common approach is watts. This refers to the maximum amount of electricity that a solar panel can generate in 'standard test conditions'. Standard test conditions involve a solar irradiance of. What size solar panel do I Need?

Solar Panel Size or Wattage: In the UK, the typical size or wattage of a residential solar panel is 250W to 450W. Solar panel dimensions refer to the overall length, width and height of the panel. These measurements are crucial because a panel's physical dimensions will dictate how many panels you can fit on your roof.

What is the average size of a solar panel in the UK?

Answer: The average size of a solar panel in the UK for residential use is around 1.7 meters long by 1 meter wide, with a thickness of 3-5 cm. In terms of power output, most panels range from 350W to 450W, making them suitable for typical UK homes.

What is a solar panel size?

When speaking about a solar panel's size, people can often become confused. Solar panel size can refer to the power it produces (measured in watts) and its physical dimensions. Nevertheless, the typical size of a residential solar panel in the UK is 250W to 450W.

Are there different types of solar panels in the UK?

Different manufacturers offer different types and sizes of PV panels in the UK. Different solutions may need panels with different sizes and dimensions. It shows you have more flexibility in selecting the right solar panel for your home setup.

How big are commercial solar panels?

Commercial panels typically have a power output of 400 to 600 watts. Their dimensions are often around 1.95 metres long and 1 metre wide, covering 1.95 square metres per panel. A side-by-side comparison of residential's and commercial's most common solar panel dimensions.

How important is solar panel sizing?

In summary, understanding solar panel sizes (dimensions, wattage, and



weight) is important for effective energy generation. Moreover, getting the sizing right also matters to ensure you can fit all the panels on your roof required and that it can withstand their weight.



Typical solar panel size uk



[Solar Panel Sizes & Dimensions - Complete Guide for ...](#)

In this 10-minute read, we look at the varying sizes and types of solar panels available for residential and commercial applications in the UK -- and how to choose the right solar panels for your project.

[Solar Photovoltaic Panel Sizes \[Full List And Other ...](#)

Are There Multiple Sizes of Solar Panels? Yes, many solar panel sizes are available on the market, and they can vary depending on the types of solar panels and the manufacturers. Most residential solar panels' standard size range from ...



[Solar Panel Sizes & Dimensions in the UK \(2025\)](#)

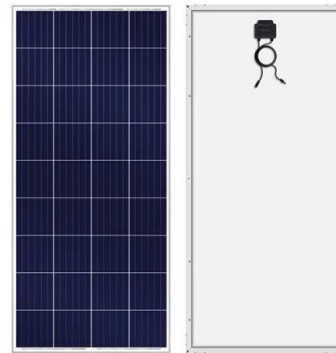
Typical residential solar panels in the UK range from 250W to 450W, with dimensions of approximately 189cm x 100cm x 3.99cm. The size and number of panels you'll need depend on factors such as your energy ...

[How Much Do Solar Panels Cost in the UK? A 2025 ...](#)

Solar panel costs in the UK typically range from £4,000 to £10,000, depending on your property size, energy usage, and system specifications.



Long-term savings and government incentives can help offset ...



[Solar Panel Costs UK \(Updated: August 2025\)](#)

A typical 4kW solar panel system for 2-3 bedroom houses costs £6,600 - £8,100 with installation. Added together, the total cost of solar panels and a battery in the UK is £14,900 - £16,400. A 4kW system breaks even in 6 - ...

[Standard Solar Panel Sizes, and Dimensions \(2025\)](#)

Choosing the right solar panel size for your home involves a few considerations. These include power output, physical dimensions, and weight to ensure optimal energy generation. The average domestic solar panel outputs ...



[Comprehensive Guide to Solar Panel Sizing for UK...](#)

Sizing Up Solar Panels: A Guide to Choosing the Right Size for Your Home Solar panels... great for the environment and great for the home. In this article, we'll answer some of the most frequently asked questions about solar panel sizing ...



[Solar Panel Dimensions and Sizes: Complete Guide](#)

Standard Solar Panel Size How big is a solar panel? There are three main sizes of solar panels to know: 60-cell, 72-cell, and 96-cell. For commercial and residential solar panels, the 60-cell and 72-cell solar panels size are most ...



Contact Us

For catalog requests, pricing, or partnerships, please visit:
<https://solar360.co.za>