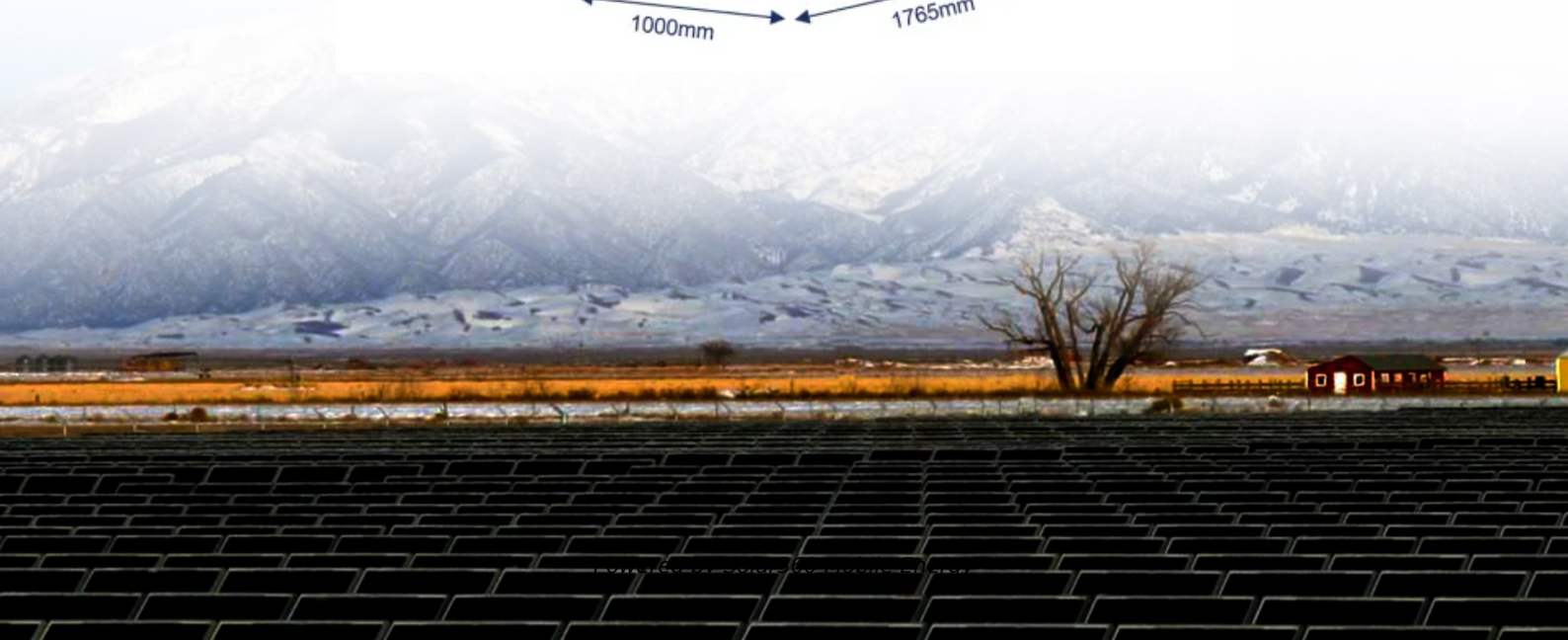


Weight of solar panels on roof uk





Overview

Most standard residential solar panels in the UK weigh between 18 and 25 kilograms each. The variation depends on materials used (like glass thickness, frame type, or integrated microinverters) and the overall panel size.

Most standard residential solar panels in the UK weigh between 18 and 25 kilograms each. The variation depends on materials used (like glass thickness, frame type, or integrated microinverters) and the overall panel size.

Most of the solar panels available on the market, consisting of 60 cells per panel, weigh about 40 pounds (18 kilograms). However, some solar panels can weigh up to 50 pounds (22.6 kilograms), but these are usually produced for the commercial sector rather than for households. One of the most.

Most solar panels weigh around 40 pounds (18kg) each but can weigh around 30-50 pounds (13-22 kg). In terms of size, most solar panels are 65 inches by 39 inches (5.4ft by 3.25ft) and contain around 60 solar cells. These panels are great for the average home, but if you are installing them on a.

The weight of solar panels can vary depending on a number of factors, including the size and type of panel, the mounting system used, and the roof structure itself. On average, a typical solar panel can weigh between 15 and 25 kilograms per square meter. This means that a 4kW solar panel system.

Residential solar panels in the UK typically measure around 1.7 to 2 square metres and deliver 350 to 450 watts of power, but they're not all created equal. Some are ultra-efficient and compact; others are larger but deliver less per square metre. If you're tight on roof space or looking for the.

A standard solar panel weighs approximately 40 pounds (18 kg), but this figure can differ depending on the type and brand. The weight is a vital aspect to consider during the installation process of both residential and commercial solar panels. Solar panels are designed for home use. Tip the scales.

The average commercial solar panel weighs 22kg, meaning that for a 2,000m² building, there will be an additional 22 tonnes of weight. The fixing



method must also be taken into account, as a ballasted system, for example, will bring additional weight to anchor the array to the roof. Replace, Repair. How much weight do solar panels add to a roof?

When figuring out how much weight do solar panels add to a roof, that would be quite useful data to have. All individual solar panels weigh less than 100 lbs. However, solar systems with 8kW rated capacity and above add more than 1,000 lbs to your roof. Not to worry, however.

How heavy are solar panels?

Most of the solar panels available on the market, consisting of 60 cells per panel, weigh about 40 pounds (18 kilograms). However, some solar panels can weigh up to 50 pounds (22.6 kilograms), but these are usually produced for the commercial sector rather than for households.

How much does a polycrystalline solar panel weigh?

They weigh around 30-40 pounds (13-18 kilograms). Polycrystalline panels are cheaper than monocrystalline panels, but they are not as energy efficient. They usually weigh around 42 pounds (20 kilograms). The cheapest option are amorphous (thin-film) panels.

How big are solar panels in the UK?

Solar panel sizes in the UK can vary widely depending on the type, efficiency, and intended use of the system. Most residential panels measure around 1.7 metres by 1 metre and produce between 350 and 450 watts of power.

Can a roof support solar panels?

If you are planning to install solar panels, it is important to know your roof can support them first. On average, the total weight that will be loaded onto your roof is around 4 pounds for every square foot. Newer homes are likely to be able to handle the weight of solar panels but if you have an older home, the roof may not be as strong.

How much do amorphous solar panels weigh?

Amorphous panels are made with a photovoltaic film which weighs much less than standard panels and makes them more flexible. It is the type you would find in a solar-powered calculator. Generally, amorphous solar panels weigh around 15 pounds (6kg) per panel.



Weight of solar panels on roof uk



PV panel installation on metal roofs - Weight limitations

The results of the survey will determine if the roof is suitable to safely hold the panels and if replacing or refurbishing the roof is necessary. The average commercial solar panel weighs ...

PV panel installation on metal roofs - Weight limitations

The results of the survey will determine if the roof is suitable to safely hold the panels and if replacing or refurbishing the roof is necessary. The average commercial solar panel weighs 22kg, meaning that for a 2,000m2 building, ...



[Building regulations for solar panels: explained \[UK, ...\]](#)

Installers must only fit solar panels if they're sure your roof can hold their weight, and carry on doing so for up to 40 years. Fortunately, most roofs in the UK are built to hold much more than a solar panel system, which usually ...



[Can You Put Solar Panels on a Flat Roof?](#)

In this guide, we'll discuss everything you need to know about putting solar panels on a flat roof (UK). Read on to discover how the installation process works and what to consider before



investing in your own flat roof solar ...



Our Lifepo4 batteries can beconnected in parallels and in series for larger capacity and voltage.



[FAQs - Structural Calculations for Solar Panels](#)

FAQs - Structural Calculations for Solar Panels
Can I fit solar panels to a roof myself? DIY solar panels are available, but you still need to be sure your roof can take the additional weight plus a full wind load and snow - it ...

Is my roof suitable for solar panels (and what is the weight of a solar

Is my roof suitable for solar panels (and what is the weight of a solar panel)? If you're just starting to think about installing solar panels for your home, then you may be wondering if your roof is ...



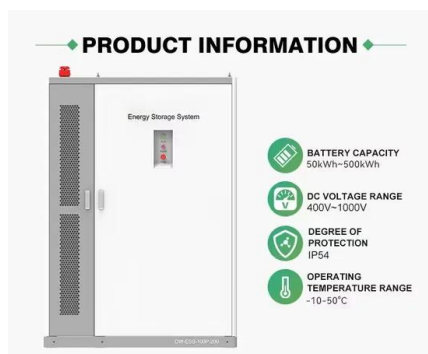
[In-roof solar panels: are they worth it? UK, 2025\]](#)

What are in-roof solar panels? In-roof solar panels, or roof-integrated photovoltaics (RIPV), are fundamentally the same as traditional solar panels, except they are intended to be part of a property's roof (as opposed to ...



[Solar PV panels: Heavy loads , Features , Building](#)

Anyone considering PV panels should look beyond the capital cost and payback periods to the impact the installation could have on their roof. The first issue to consider is the additional loads that the panels will impose. ...

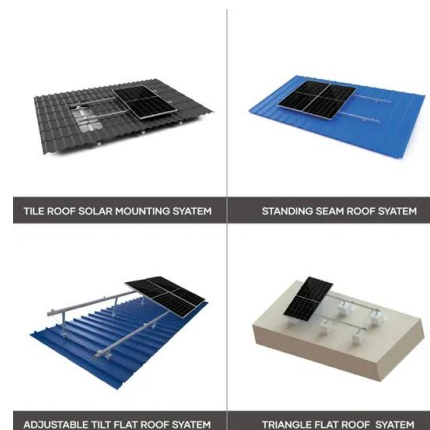


[Solar Rooftop Calculator: How Many Solar Panels](#)

To help you adequately estimate the size of the solar system and the number of solar panels you can put on your roof, you can use the following Solar Rooftop Calculator. Further on, we have also calculated how many solar panels you ...

[How Much Do Solar Roofs Weigh? 5 Key ...](#)

How Much Do Solar Roofs Weigh? Solar roofs' weight depends on various factors, such as the individual solar panels and the number of panels installed. Residential solar panels typically weigh around 40 pounds, while ...



Contact Us

For catalog requests, pricing, or partnerships, please visit:
<https://solar360.co.za>