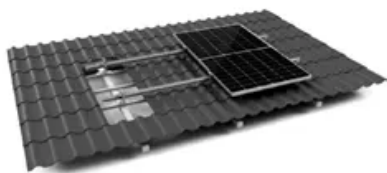


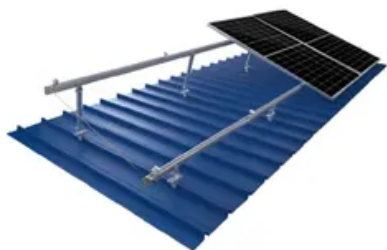
What is the solar system near to



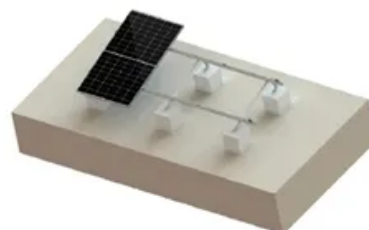
TILE ROOF SOLAR MOUNTING SYATEM



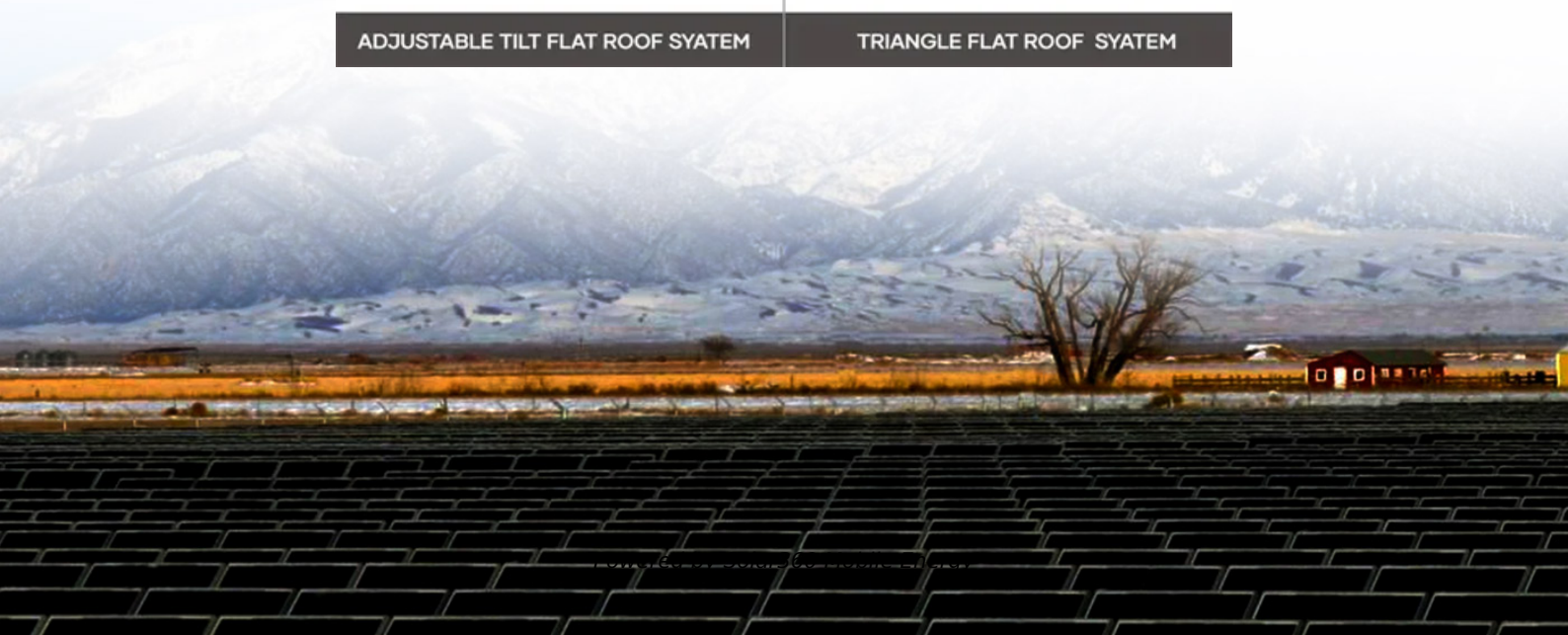
STANDING SEAM ROOF SYATEM



ADJUSTABLE TILT FLAT ROOF SYATEM



TRIANGLE FLAT ROOF SYATEM





Overview

Since 2016, astronomers have known that the solar system next door to ours—a triple-sun system—has one planet, Proxima b, located in the so-called habitable zone.

Since 2016, astronomers have known that the solar system next door to ours—a triple-sun system—has one planet, Proxima b, located in the so-called habitable zone.

Since 2016, astronomers have known that the solar system next door to ours—a triple-sun system—has one planet, Proxima b, located in the so-called habitable zone. Now a group of researchers led by Mario Damasso from the National Institute for Astrophysics in Italy claims to have discovered a second.

Animated 3D map of the nearest stars, centered on the Sun. 3D red green glasses are recommended to view this image correctly. A radar map of all known stellar and substellar objects within 9 light years (ly), arranged clockwise in hours of right ascension, and marked by distance (■) and position.

Of the three stars in the system, the dimmest - called Proxima Centauri - is actually the nearest star to the Sun. The two bright stars, called Alpha Centauri A and B form a close binary system; they are separated by only 23 times the Earth - Sun distance. This is slightly greater than the distance.

The Sun is the closest star to Earth, providing light and warmth essential for life. Proxima Centauri, the closest star after the Sun, is part of the Alpha Centauri system. Barnard's Star is a red dwarf 5.96 light-years away and might have planets around it. The Sun and its planets live in a.

Alpha Centauri is the nearest star system. Distance from Earth 4,365 al (40 000 billion kilometers. The Sun (yellow star) distance from Earth 150 000 000 km, the exoplanet distance from Alpha Centauri b (orange star) 6 000 000 km.

Our planetary system is called “the solar system” because we use the word



"solar" to describe things related to our star, after the Latin word for Sun, "solis." 2. Our solar system orbits the center of the Milky Way galaxy at about 515,000 mph (829,000 kph). 3. It takes our solar system about 230. Where is our Solar System located?

Our solar system is located in the Milky Way, a barred spiral galaxy with two major arms, and two minor arms. Our Sun is in a small, partial arm of the Milky Way called the Orion Arm, or Orion Spur, between the Sagittarius and Perseus arms. Our solar system orbits the center of the galaxy at about 515,000 mph (828,000 kph).

What is the closest star system to Earth?

Alpha Centauri is the nearest star system. Distance from Earth 4,365 al (40 000 billion kilometers. The Sun (yellow star) distance from Earth 150 000 000 km, the exoplanet distance from Alpha Centauri b (orange star) 6 000 000 km.

Where is the Sun located in the Milky Way?

Our Sun is in a small, partial arm of the Milky Way called the Orion Arm, or Orion Spur, between the Sagittarius and Perseus arms. Our solar system orbits the center of the galaxy at about 515,000 mph (828,000 kph). It takes about 230 million years to complete one orbit around the galactic center. An artist's concept of our solar system.

How many star systems are closest to the Sun?

Using NASA and other scientific sources, Stacker compiled a list of the 50 star systems closest to our sun. Explore these systems to learn what they can reveal about the universe and which ones might provide the right conditions for habitable planets.

Why is Proxima the closest star to the Sun?

That's because it's part of the Alpha Centauri system, the closest star system to our sun. Alpha Centauri consists of three known stars (including Proxima). Of the three, Proxima is closest, at 4.2 light-years away. Alpha Centauri appears as the 3rd-brightest star in Earth's sky. But Proxima is too faint to see with the eye.

Which star is closest to Earth?



The closest system is Alpha Centauri, with Proxima Centauri as the closest star in that system, at 4.2465 light-years from Earth. The brightest, most massive and most luminous object among those 131 is Sirius A, which is also the brightest star in Earth's night sky; its white dwarf companion Sirius B is the hottest object among them.



What is the solar system near to



The 10 Closest Stars to Earth

Alpha Centauri is the nearest star system. Distance from Earth 4,365 al (40 000 billion kilometers. The Sun (yellow star) distance from Earth 150 000 000 km, the exoplanet distance from Alpha Centauri b (orange star) 6 000 ...

[Earth , Definition, Size, Composition, Temperature, ...](#)

4 ???· Earth, third planet from the Sun and the fifth largest planet in the solar system in terms of size and mass. Its single most outstanding feature is that its near-surface environments are the only places in the universe known to harbor ...



[Other Objects in the Solar System , Earth Science](#)

Their orbits carry them from the outer solar system to the inner solar system, close to the Sun (Figure below). Early in Earth's history, comets may have brought water and other substances to Earth during collisions. The highly ...

[A Near-Twin of Our Solar System? Let's Take a ...](#)

More than 2,500 light-years away from our Sun and its family of planets is a different family - a Sun-like star with a planetary entourage of eight. It's the only system known so far with a planet count that matches our own. ...



[50 closest star systems to earth and what we might ...](#)

Since operations began on Oct. 1, 1958, NASA has been exploring our solar system and the stars beyond. The sun is just one out of more than 100 billion stars in our Milky Way galaxy--and these far-flung stellar ...

[Solar system . Definition, Planets, Diagram, Videos.](#)

5 ???· Solar system, assemblage consisting of the Sun and those bodies orbiting it: 8 planets with more than 400 known planetary satellites; many asteroids, some with their own satellites; comets and other icy bodies; and ...



Earth , Definition, Size, Composition, Temperature, Mass, & Facts

4 ???· Earth, third planet from the Sun and the fifth largest planet in the solar system in terms of size and mass. Its single most outstanding feature is that its near-surface environments are ...



Solar system , Definition, Planets, Diagram, Videos, & Facts

5 ???· Solar system, assemblage consisting of the Sun and those bodies orbiting it: 8 planets with more than 400 known planetary satellites; many asteroids, some with their own satellites; ...



[Solar System: Planets, Moons, and the Sun Explained](#)

The solar system, once unreachable, is becoming part of humanity's extended presence.
Conclusion: A System, A Story, A Sanctuary The solar system is more than a collection of planets orbiting a star. It is a grand ...

Contact Us

For catalog requests, pricing, or partnerships, please visit:
<https://solar360.co.za>