

Where is the solar system in the milky way

12V 10AH





Overview

The is near the inner rim of the , within the of the , between the and Split linear structures (formerly). Based upon studies of stellar orbits around Sgr A* by Gillessen et al. (2016), the Sun lies at an estimated distance of 27.14 ± 0.46 kly (8.32 ± 0.14 kpc) from the Galactic Center. Boehle et al. (2016) found a smaller value of 25.

Where is the Solar System located in the Milky Way?

Solar System's Location in the Milky Way: The solar system is located in one of the spiral arms named the Orion Arm. It is about 27,000 light-years from the galactic center. This location places our solar system in a relatively quiet area, which is beneficial for the development of life on Earth.

Where are we in the Milky Way?

But exactly where are we in this vast galaxy?

The Milky Way is a massive collection of stars, planets, and cosmic dust, with the Solar System residing in one of its spiral arms, known as the Orion Arm. Positioned around 27,000 light-years from the galactic center, we orbit the Milky Way's core at a speed of about 828,000 km/h.

Where is the Milky Way galaxy located?

From the Earth, our Milky Way Galaxy is visible as a milky band that stretches across the night sky. It is easier to see when you are far from bright city lights. Our solar system is located in the outer reaches of the Milky Way Galaxy, which is a spiral galaxy. The Milky Way Galaxy contains roughly 200 billion stars.

How far away is the Milky Way galaxy from the center?

Polar view of the Milky Way Galaxy showing the location of the Solar System. As to our distance from the center of the galaxy, the best guess is that we are 26,000 to 28,000 light years from the center. The estimates vary due to uncertainty in the exact size of the galaxy and the time it takes the solar system to complete one orbit of our galaxy.



Where is Earth in the Milky Way?

The bad news for geocentrists is that our Solar System doesn't even lie at the heart of the Milky Way. In fact, Earth can be found on one of the Milky Way galaxy's outlying spiral arms - the Orion-Cygnus arm, to be precise. And Earth is sitting at a point roughly halfway from the galactic centre to its outer rim.

Where is the Solar System located?

The Solar System, home to Earth and countless other fascinating planets and moons, exists within the Milky Way galaxy. But exactly where are we in this vast galaxy?



Where is the solar system in the milky way

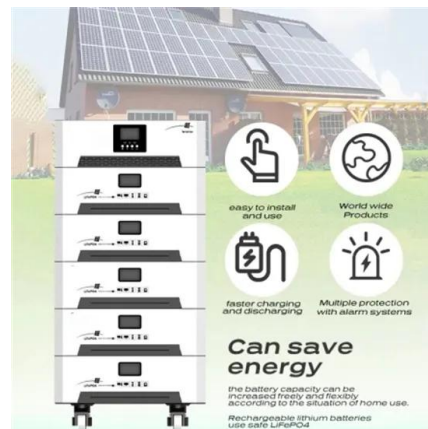
[The Solar System's Place In The Milky Way: Part 1](#)

The solar system, which participates in the galactic rotation, is therefore moving in a direction approximately aligned with my horizontal arrow. The extent to which it deviates from that alignment will be my topic next time I ...



The Milky Way Galaxy

Our solar system is located in the outer reaches of the Milky Way Galaxy, which is a spiral galaxy. The Milky Way Galaxy contains roughly 200 billion stars. Most of these stars are not visible from Earth. Almost everything that we can see in the ...



[News & Resources , Night Sky Network](#)

On that scale with our Solar System in your hand, the Milky Way Galaxy, with its 200 - 400 billion stars, would span North America (see the illustration on the right). Galaxies come in many sizes. The Milky Way is big, ...

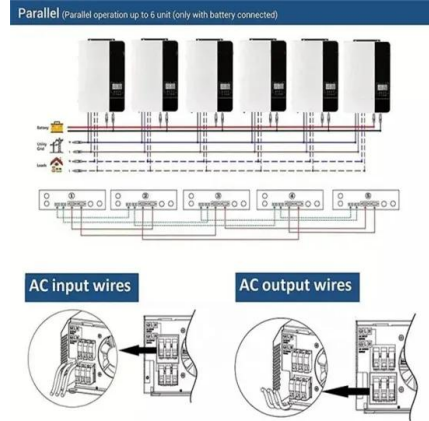


[The solar system and milky way galaxy](#)

The solar system The galaxy that our solar system belongs to is known as "The way of Chopped Hay galaxy" or "The Milky Way galaxy " It takes an oval shape with coiled spiral arms



extending from it, and the Sun lies on ...

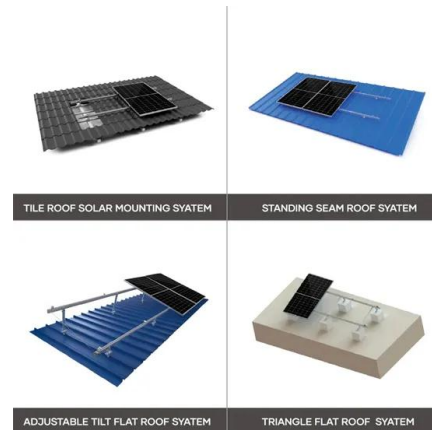


[Chandra :: Resources :: Milky Way Galaxy](#)

3. Illustration of Solar System's Orbit Our solar system, containing the Sun and the planets, is about 2/3 of the way out from the center of the Galaxy. The solar system travels in an orbit around the center of the Galaxy, at a velocity (i.e. ...

Milky Way Galaxy , Size, Definition, & Facts , Britannica

Milky Way Galaxy (sometimes simply called the Galaxy), large spiral system of about several hundred billion stars, one of which is the Sun. It takes its name from the Milky Way, the irregular luminous band of stars and ...



Milky Way

OverviewAstrographyMythologyEtymologyAppearanceAstronomical historySize and massContents

The Sun is near the inner rim of the Orion Arm, within the Local Fluff of the Local Bubble, between the Radcliffe wave and Split linear structures (formerly Gould Belt). Based upon studies of stellar orbits around Sgr A* by Gillessen et al. (2016), the Sun lies at an estimated distance of 27.14 ± 0.46 kly ($8.32 \pm$



0.14 kpc) from the Galactic Center. Boehle et al. (2016) found a smaller value of 25....

[The Milky Way Galaxy: Facts You Should Know](#)

The Milky Way is vast, and our Solar System is located in a relatively quiet part of it. Within the galactic disk, the Sun resides in the Orion Arm --a minor spiral arm nestled between two larger arms, the Perseus and ...



[News & Resources , Night Sky Network](#)

On that scale with our Solar System in your hand, the Milky Way Galaxy, with its 200 - 400 billion stars, would span North America (see the illustration on the right). Galaxies come in many sizes. The Milky Way is big, ...



[Does the Sun move around the Milky Way??](#)

The Milky Way is a spiral galaxy. We believe that it consists of a central bulge, 4 major arms, and several shorter arm segments. The Sun (and, of course, the rest of our solar system) is located near the Orion arm, between two major arms ...



[How Many Solar Systems Are in Our Galaxy?](#)

How Many Solar Systems Are in Our Galaxy? The Short Answer: Our planetary system is the only one officially called "solar system," but astronomers have discovered more than 3,200 other stars with planets orbiting ...



[The Milky Way: Our Home Galaxy Explained ...](#)

The Milky Way in Motion The Milky Way is not a static island of stars--it moves through the cosmos as part of the Local Group, a collection of over 50 galaxies including the Andromeda Galaxy and the Triangulum Galaxy. ...



- Voltage range: 91.2-947.2V
- >6000 cycles (100%DOD)
- Rated battery capacity: 216KWH (customizable)
- EMS communications: 4G/CAN/RS485

[The Location of the Solar System in the Milky Way ...](#)

Polar view of the Milky Way Galaxy showing the location of the Solar System. As to our distance from the center of the galaxy, the best guess is that we are 26,000 to 28,000 light years from the center.

15.1 The Milky Way Galaxy , Beyond the solar system , Siyavula

All the stars in this galaxy are revolving around the centre of the galaxy. Just as the Earth travels around the Sun, the Sun and our entire solar system is traveling around the centre of the Milky ...

LFP12V100





[The Milky Way: Understanding Our Place in the Galaxy](#)

The Milky Way, our celestial home, has fascinated astronomers for centuries. It is a vast galaxy, a large system that includes stars, gas (predominantly hydrogen), dust and dark matter, all bound together by gravity. ...

Contact Us

For catalog requests, pricing, or partnerships, please visit:
<https://solar360.co.za>